



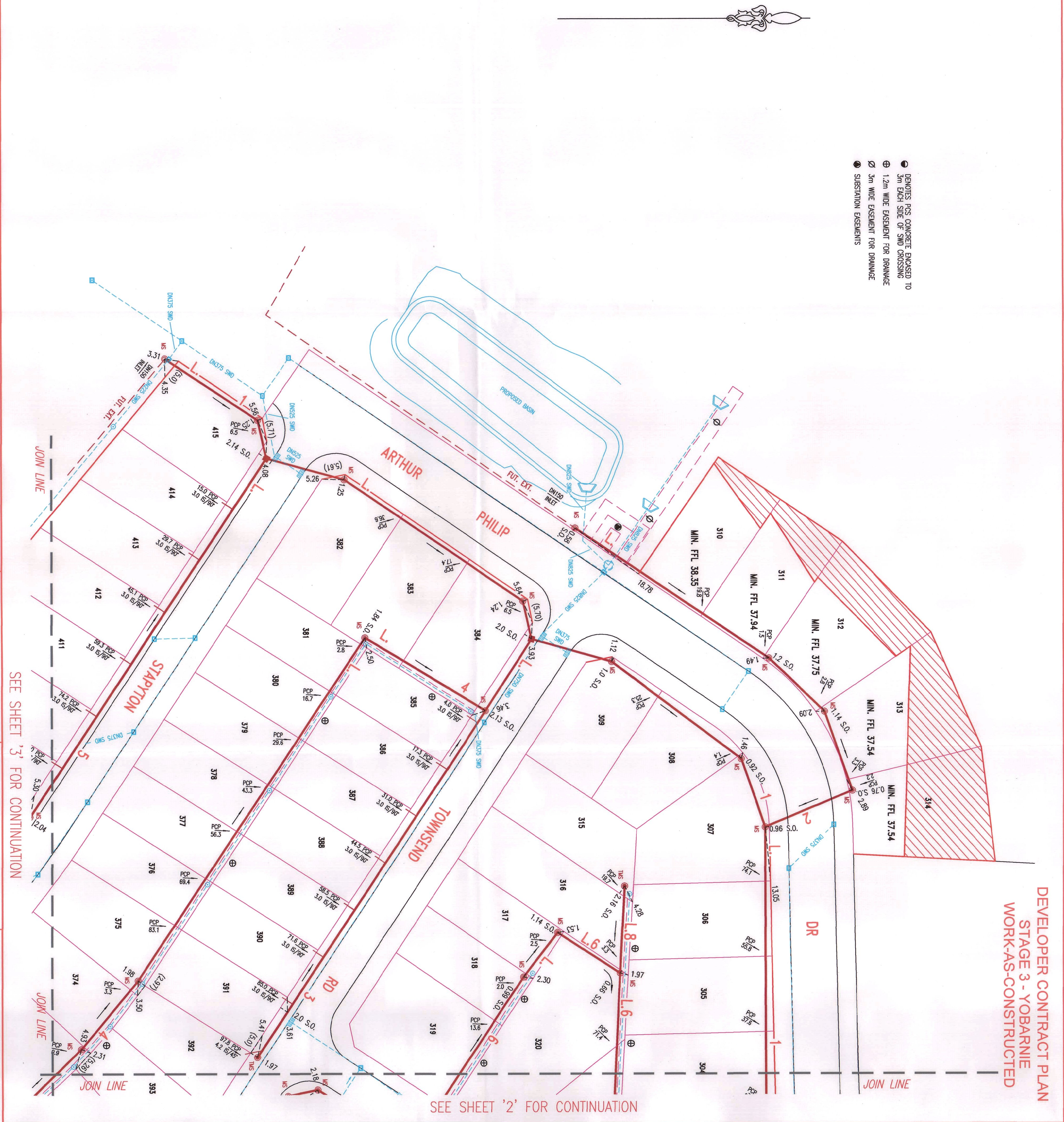
- DESIGNER AND WATER SERVICES COORDINATOR:
 DALCHEN (AUST) PTY LTD (GPO BOX 209)
 7/100 RIVERVIEW RD, PENRITH NSW 2750
 PH. No. (02) 4222 8181
 FOR:
 NRSU & RSI, PTY LTD
 C/- BILDER NSW PTY LTD
 ATTN: ANDREW FLAHERTY
 SUITE 4, LEVEL 1, 8-10 CASTLEBRAGH STREET, PENRITH NSW 2750
 PH. NO.: 0419 474 980
- THE WORKS AND MATERIALS ARE IN ACCORDANCE WITH THE SEWER RETICULATION CODE OF AUSTRALIA (NSA 02-2002-22 VERSION 3) INCLUDING THE STORM WATER SUPPLEMENT AND APPENDICES AS WELL AS THE TECHNICAL SPECIFICATION FOR LEAK TIGHT SEWER STRUCTURE (VERSION 1/17/21/4).
- ALL STRUCTURES ARE CONSTRUCTED TO SURFACE LEVELS. ALL LEVELS REFER TO FINISHED SURFACE LEVELS.
- ALL INFORMATION TAKEN FROM THE FOLLOWING PLANS SUPPLIED BY NRSU:
 DRAINING PAGE: 30 AND SMD: REDBANK-SE93 MW-BEW & UTI DWG DTM STRINGS 1504.10 (SUPPLIED 13/04/2015)
 CIVIL SET PPE (953): REDBANK-SE93 MW-CAR 1788 DC UTI DWG PLANS-150410 (SUPPLIED 13/04/2015)
- THE MINIMUM NUMBER OF FIELD COMPACTION TESTS CONDUCTED TO VERIFY THE SEWERAGE CODE OF AUSTRALIA ARE (INCL. PCS ROAD CROSSINGS):
 PIPE ENGAGEMENT ZONE: 0 TESTS CONDUCTED (SEE NOTES A & B)
 TRENCH FILL ZONE (PARTICULAR): 44 TESTS CONDUCTED
 TRENCH FILL ZONE (NON PARTICULAR): 138 TESTS CONDUCTED
 TRENCH FILL ZONE (MAINTENANCE STRUCTURES): 9 TESTS CONDUCTED
 TRENCH FILL ZONE - TOTAL: 192 TESTS CONDUCTED
- ALL LEVELS ELECTRONICALLY GENERATED. NO LEVEL BOOK AVAILABLE.
- BUILDING OVER/ADJACENT TO SEWER - CONDITIONS MAY APPLY. REFER TO DALCHEN FOR DETAILS.
- ALL EXCAVATION, SHORING EXCAVATION AND STABILITY OF ADJACENT STRUCTURES/SERVICES/WEIINGS WAS THE RESPONSIBILITY OF THE CONSTRUCTOR.
- PPRS CONCRETE EXPOSED SHOWN ACCORDINGLY: REFER TO SSM-1205-V
- ALL JUNCTIONS CONSTRUCTED MIN. 0.7m OFF BOUNDARY/EXHAUST/RETAINING WALL ON THE LOW SIDE OF THE LOT UNLESS A STRUCTURE WAS IN THAT LOCATION, THEN THE JUNCTION WAS LOCATED 1.0m CLEAR OF THE STRUCTURE AT THE UPSTREAM END OF THE STRUCTURE. REFER SHEET 8 FOR DETAILS.
- ALL JUNCTIONS FOR THE PRRS ARE LOCATED AS PER THE JUNCTION SCHEMATIC ON SHEET 8. (REFER TO LEAK TIGHT SPECIFICATION VERSION 8.0 17/12/14)
 ● DENOTES STANDARD PCS CONNECTION (REFER TO DETAIL ON SHEET 8) - 457/0.6m UNO
 ● DENOTES PCS CONCRETE EXPOSED TO 3m EACH SIDE OF SMD CROSSING
- THE TOTAL LENGTH OF THE DN100 PCS'S EXCLUDING RESERS IS APPROXIMATELY 291.21m. PCS'S HAVE MINIMUM STIFFNESS RATING OF S110. JOINTING SOLVENT WELDED.
- BULKHEADS AT EACH ROAD CROSSING/EDGE OF BRIMLEN CROSSING TO SEM-1206. THIS APPLIES TO ANY ACCESS ROADS, CARPARKS, ETC. FOR WH'S REFER TO THE FOLLOWING DTC DRAWINGS:
 DTC-2000 (REV/C 18.03.15), DTC-2203 (REV/B 18.03.15), DTC-2220 (REV/D 18.03.15), DTC-2221 (REV/A 01.03.13), DTC-2222 (REV/C 18.03.15)
- AREAS HATCHED THIS NOT DRAINED:

- DENOTES PCS CONCRETE EXPOSED TO 3m EACH SIDE OF SMD CROSSING
- ⊕ 1.2m WIDE EASEMENT FOR DRAINAGE
- ⊕ 3m WIDE EASEMENT FOR DRAINAGE
- SUBSTATION EASEMENTS

- DESIGNER AND WATER SERVICES COORDINATOR:
 DALCHEN (AUST) PTY LTD (GPO BOX 209)
 7/100 RIVERVIEW RD, PENRITH NSW 2750
 PH. No. (02) 4222 8181
 FOR:
 NRSU & RSI, PTY LTD
 C/- BILDER NSW PTY LTD
 ATTN: ANDREW FLAHERTY
 SUITE 4, LEVEL 1, 8-10 CASTLEBRAGH STREET, PENRITH NSW 2750
 PH. NO.: 0419 474 980
- THE WORKS AND MATERIALS ARE IN ACCORDANCE WITH THE SEWER RETICULATION CODE OF AUSTRALIA (NSA 02-2002-22 VERSION 3) INCLUDING THE STORM WATER SUPPLEMENT AND APPENDICES AS WELL AS THE TECHNICAL SPECIFICATION FOR LEAK TIGHT SEWER STRUCTURE (VERSION 1/17/21/4).
- ALL STRUCTURES ARE CONSTRUCTED TO SURFACE LEVELS. ALL LEVELS REFER TO FINISHED SURFACE LEVELS.
- ALL INFORMATION TAKEN FROM THE FOLLOWING PLANS SUPPLIED BY NRSU:
 DRAINING PAGE: 30 AND SMD: REDBANK-SE93 MW-BEW & UTI DWG DTM STRINGS 1504.10 (SUPPLIED 13/04/2015)
 CIVIL SET PPE (953): REDBANK-SE93 MW-CAR 1788 DC UTI DWG PLANS-150410 (SUPPLIED 13/04/2015)
- THE MINIMUM NUMBER OF FIELD COMPACTION TESTS CONDUCTED TO VERIFY THE SEWERAGE CODE OF AUSTRALIA ARE (INCL. PCS ROAD CROSSINGS):
 PIPE ENGAGEMENT ZONE: 0 TESTS CONDUCTED (SEE NOTES A & B)
 TRENCH FILL ZONE (PARTICULAR): 44 TESTS CONDUCTED
 TRENCH FILL ZONE (NON PARTICULAR): 138 TESTS CONDUCTED
 TRENCH FILL ZONE (MAINTENANCE STRUCTURES): 9 TESTS CONDUCTED
 TRENCH FILL ZONE - TOTAL: 192 TESTS CONDUCTED
- ALL LEVELS ELECTRONICALLY GENERATED. NO LEVEL BOOK AVAILABLE.
- BUILDING OVER/ADJACENT TO SEWER - CONDITIONS MAY APPLY. REFER TO DALCHEN FOR DETAILS.
- ALL EXCAVATION, SHORING EXCAVATION AND STABILITY OF ADJACENT STRUCTURES/SERVICES/WEIINGS WAS THE RESPONSIBILITY OF THE CONSTRUCTOR.
- PPRS CONCRETE EXPOSED SHOWN ACCORDINGLY: REFER TO SSM-1205-V
- ALL JUNCTIONS CONSTRUCTED MIN. 0.7m OFF BOUNDARY/EXHAUST/RETAINING WALL ON THE LOW SIDE OF THE LOT UNLESS A STRUCTURE WAS IN THAT LOCATION, THEN THE JUNCTION WAS LOCATED 1.0m CLEAR OF THE STRUCTURE AT THE UPSTREAM END OF THE STRUCTURE. REFER SHEET 8 FOR DETAILS.
- ALL JUNCTIONS FOR THE PRRS ARE LOCATED AS PER THE JUNCTION SCHEMATIC ON SHEET 8. (REFER TO LEAK TIGHT SPECIFICATION VERSION 8.0 17/12/14)
 ● DENOTES STANDARD PCS CONNECTION (REFER TO DETAIL ON SHEET 8) - 457/0.6m UNO
 ● DENOTES PCS CONCRETE EXPOSED TO 3m EACH SIDE OF SMD CROSSING
- THE TOTAL LENGTH OF THE DN100 PCS'S EXCLUDING RESERS IS APPROXIMATELY 291.21m. PCS'S HAVE MINIMUM STIFFNESS RATING OF S110. JOINTING SOLVENT WELDED.
- BULKHEADS AT EACH ROAD CROSSING/EDGE OF BRIMLEN CROSSING TO SEM-1206. THIS APPLIES TO ANY ACCESS ROADS, CARPARKS, ETC. FOR WH'S REFER TO THE FOLLOWING DTC DRAWINGS:
 DTC-2000 (REV/C 18.03.15), DTC-2203 (REV/B 18.03.15), DTC-2220 (REV/D 18.03.15), DTC-2221 (REV/A 01.03.13), DTC-2222 (REV/C 18.03.15)
- AREAS HATCHED THIS NOT DRAINED:

No.	AMENDMENT DESCRIPTION	BY	DATE
A	ISSUED FOR REVIEW	A.P.	24.04.15
B	ISSUED FOR TENDER	A.P.	30.04.15
C	ISSUED FOR SMC APPROVAL	A.P.	04.08.15
D	PROPERTY CONNECTION AS PER LEAK TIGHT SPEC	A.P.	04.08.15
E	AMENDMENTS TO SUT ROAD 3, 4 & 5 REGARDING	A.P.	18.08.15
F	PROPERTY CONNECTION DETAIL AMENDED	J.F.	03.08.15
G	WORK AS CONSTRUCTED	ST	30.11.15

PLANT TO BE READ IN CONJUNCTION WITH CORRESPONDING WATER STANDARDS	TYPE	DATE	REF.
STORM WATER COOPERATION	WATER	DN100	30.04.15
PRIOR TO COMMENCEMENT OF EXCAVATION WORKS	PROPOSED AND EXISTING SERVICES CONTRACTOR'S DRAWINGS	30.04.15	DESIGN
TELECOMMUNICATIONS	TELECOM	30.04.15	SONS
STORM WATER	STORM	30.04.15	SONS



DEVELOPER CONTRACT PLAN
 STAGE 3 - YOBARNIE
 WORKS-AS-CONSTRUCTED

WORK AS CONSTRUCTED CERTIFICATION

DESIGNER	DATE	REF.
DALCHEN (AUST) PTY LTD	30.11.15	DESIGN
DESIGNER	30.11.15	DESIGN

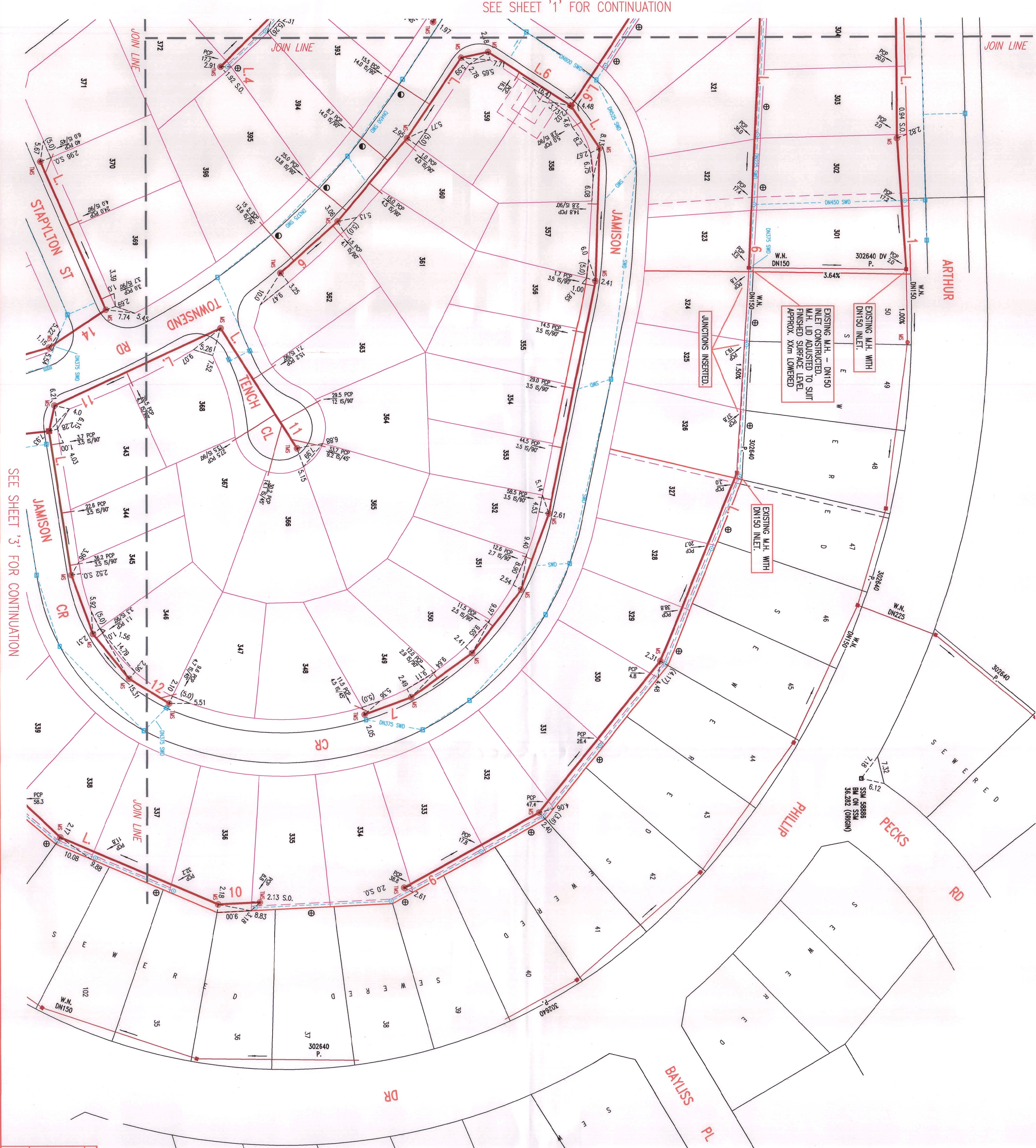
PIPE SCHEDULE	CLASS	LENGTH	PIPE LAYING METHOD	NOTES
150 U.P.V.C. S18	S18	2173.62	SEE NOTE 12	
100 U.P.V.C. S110	S110	281.21	SEE NOTE 12	

SCALE	VERTICAL	HORIZONTAL
PLAN	1:500	1:500
CROSS SECTIONS	1:125	NATURAL

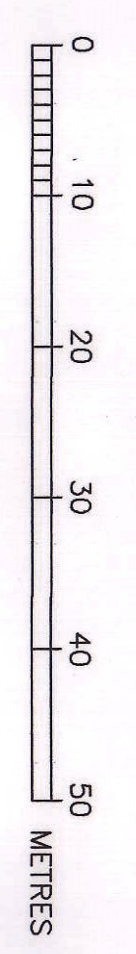
DESIGNER	DATE	REF.
DALCHEN (AUST) PTY LTD	30.11.15	DESIGN
DESIGNER	30.11.15	DESIGN

JOIN LINE

SEE SHEET '1' FOR CONTINUATION



SEE SHEET '3' FOR CONTINUATION



- DENOTES PCS CONCRETE ENCASED TO 3m EACH SIDE OF SMD CROSSING
- ⊕ 12m WIDE EASEMENT FOR DRAINAGE
- ⊕ 3m WIDE EASEMENT FOR DRAINAGE
- SUBSTATION ESSEMENTS

DEVELOPER CONTRACT PLAN
STAGE 3 - YOBARNIE
WORKS-AS-CONSTRUCTED

No.	AMENDMENT DESCRIPTION	BY	DATE
0	WORK AS CONSTRUCTED	ST	30.11.15
F	PROPERTY CONNECTION DETAIL AMENDED	J.F.	03.09.15
E	AMENDMENTS TO SUIT ROAD 3, 4 & 5 REGRADING	A.P.	18.08.15
D	PROPERTY CONNECTION AS PER LEAK TIGHT SPEC.	A.P.	04.08.15
C	ISSUED FOR SMC APPROVAL	A.P.	30.04.15
B	ISSUED FOR TENDER	A.P.	24.04.15
A	ISSUED FOR REVIEW	A.P.	25.02.15

WORKS AS CONSTRUCTED CERTIFICATION

DEVELOPER: **NRW & RSL PTY LTD**
 W.S.C.: **QUALCHEK PTY LTD**
 CONSTRUCTOR: **FLUID SERVICES**
 COMPLETED: 16.10.15
 W.A.C. PREPARED: 30.11.15

DESIGNER: **QUALCHEK PTY LTD**
 I CERTIFY THAT THE WORKS HAVE BEEN CONSTRUCTED IN ACCORDANCE WITH THE WORKS AS CONSTRUCTED DRAWINGS

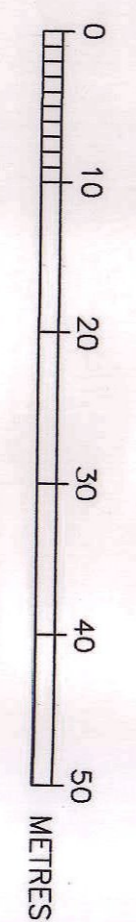
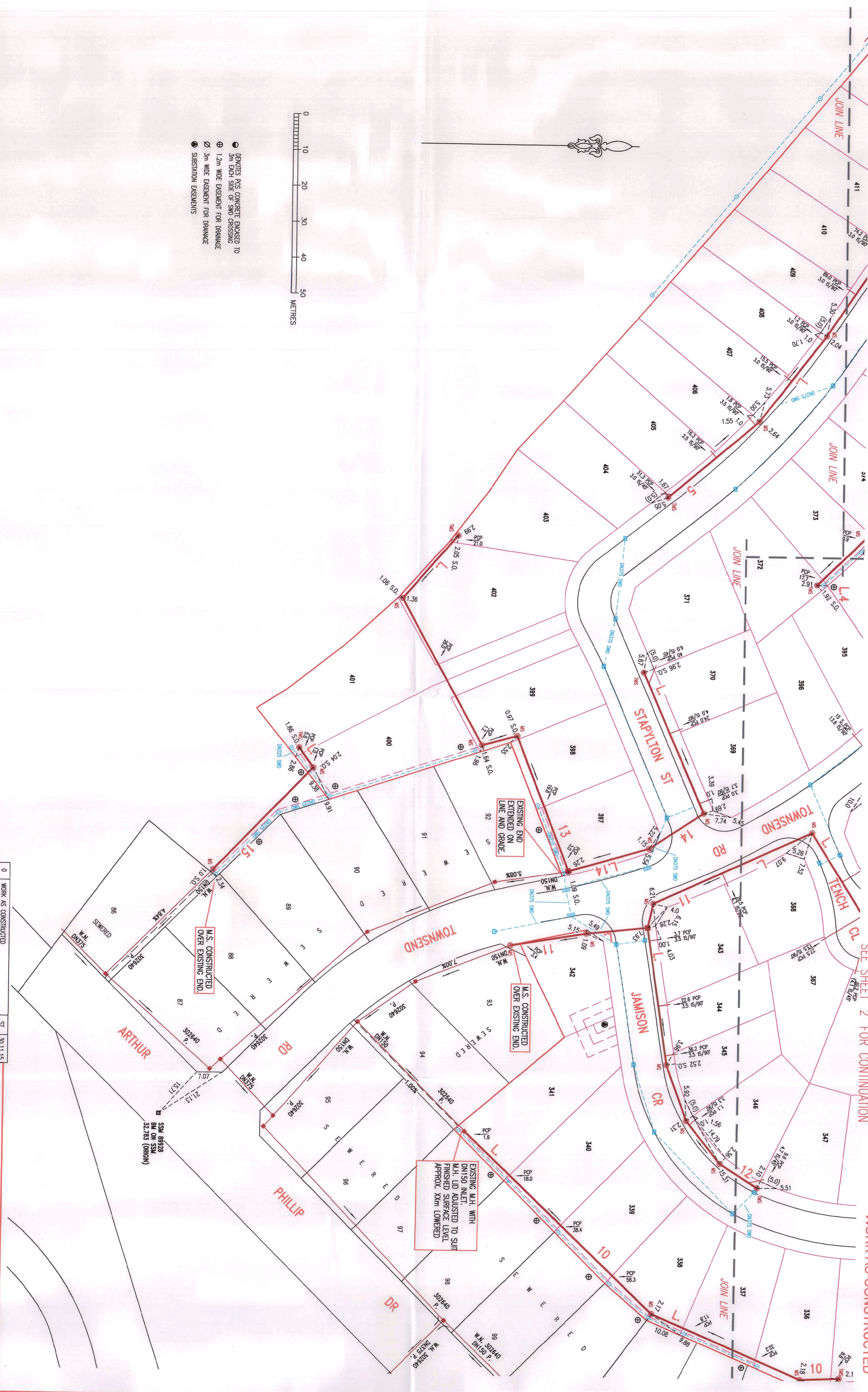
Sydney WATER
 Case No. 143022WW | SHT 2 OF 8 SHTS.

SYDNEY WATER CORPORATION
 FOR DETAILS OF SERVICES SEE SHEET 1

SEE SHEET '1' FOR CONTINUATION

SEE SHEET '2' FOR CONTINUATION

DEVELOPER CONTRACT PLAN
STAGE 3 - YOBARNIE
WORK-AS-CONSTRUCTED



- ⊕ DENOTES PCS CONCRETE ENCASED TO 3m EACH SIDE OF SMD CROSSING
- ⊕ 1.2m WIDE EASEMENT FOR DRAINAGE
- ⊕ 3m WIDE EASEMENT FOR DRAINAGE
- ⊕ SUBSTATION EASEMENTS

No.	AMENDMENT DESCRIPTION	A.P.	DATE
A	ISSUED FOR REVIEW	A.P.	24.04.15
B	ISSUED FOR TENDER	A.P.	30.04.15
C	ISSUED FOR SMC APPROVAL	A.P.	04.08.15
D	PROPERTY CONNECTION AS PER LEAK TIGHT SPEC	A.P.	18.08.15
E	AMENDMENTS TO SUIT ROAD 3, 4 & 5 REGARDING	J.F.	03.09.15
F	PROPERTY CONNECTION DETAIL AMENDED	ST	30.11.15
0	WORK AS CONSTRUCTED		

DESIGNED: A.P.	DRAWN: ST	REVIEWED: C.T.
DESIGNER: OULCHER PTY LTD	DEVELOPER: NBU & RSL PTY LTD	SYDNEY WATER CORPORATION
CONTRACTOR: OULCHER PTY LTD	CONTRACTOR: OULCHER PTY LTD	SYDNEY WATER CORPORATION
W.A.C. PREPARED: 30.11.15	W.A.C. PREPARED: 30.11.15	SYDNEY WATER CORPORATION
FOR DETAILS OF SERVICES SEE SHEET 1	FOR DETAILS OF SERVICES SEE SHEET 1	SYDNEY WATER CORPORATION

FILE LOCATION: PM127105-0

DESIGNED: A.P.

DRAWN: ST

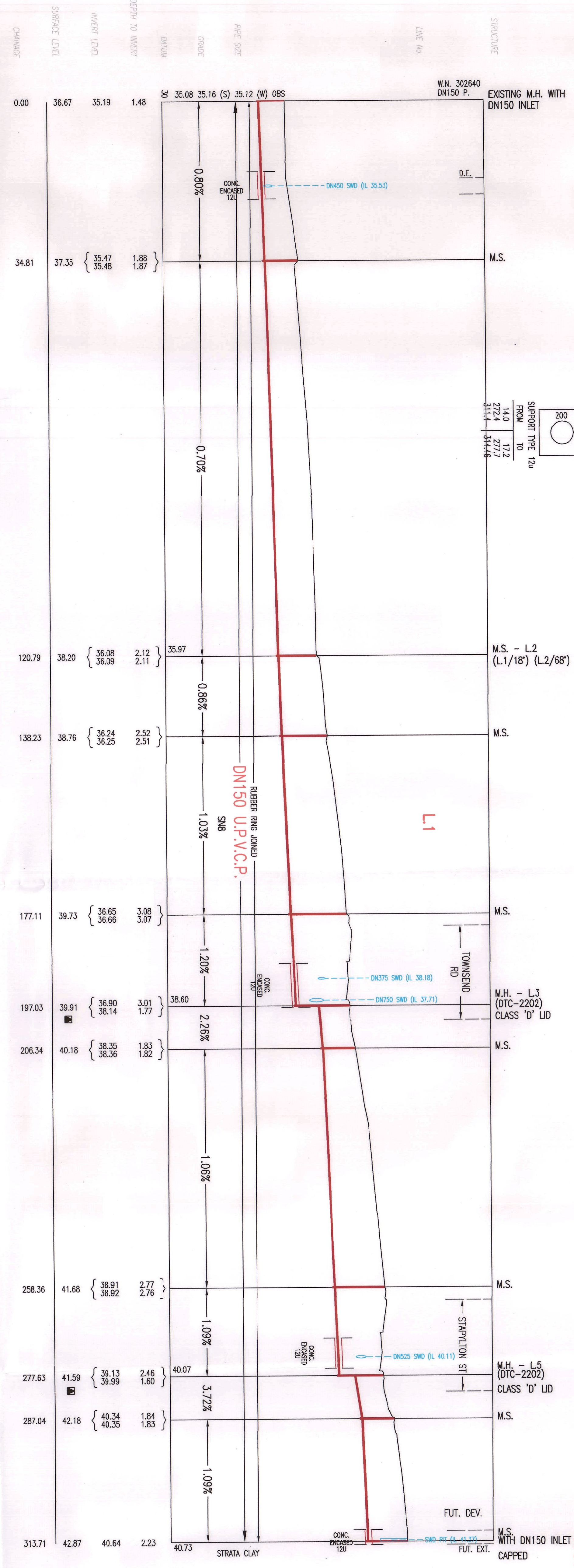
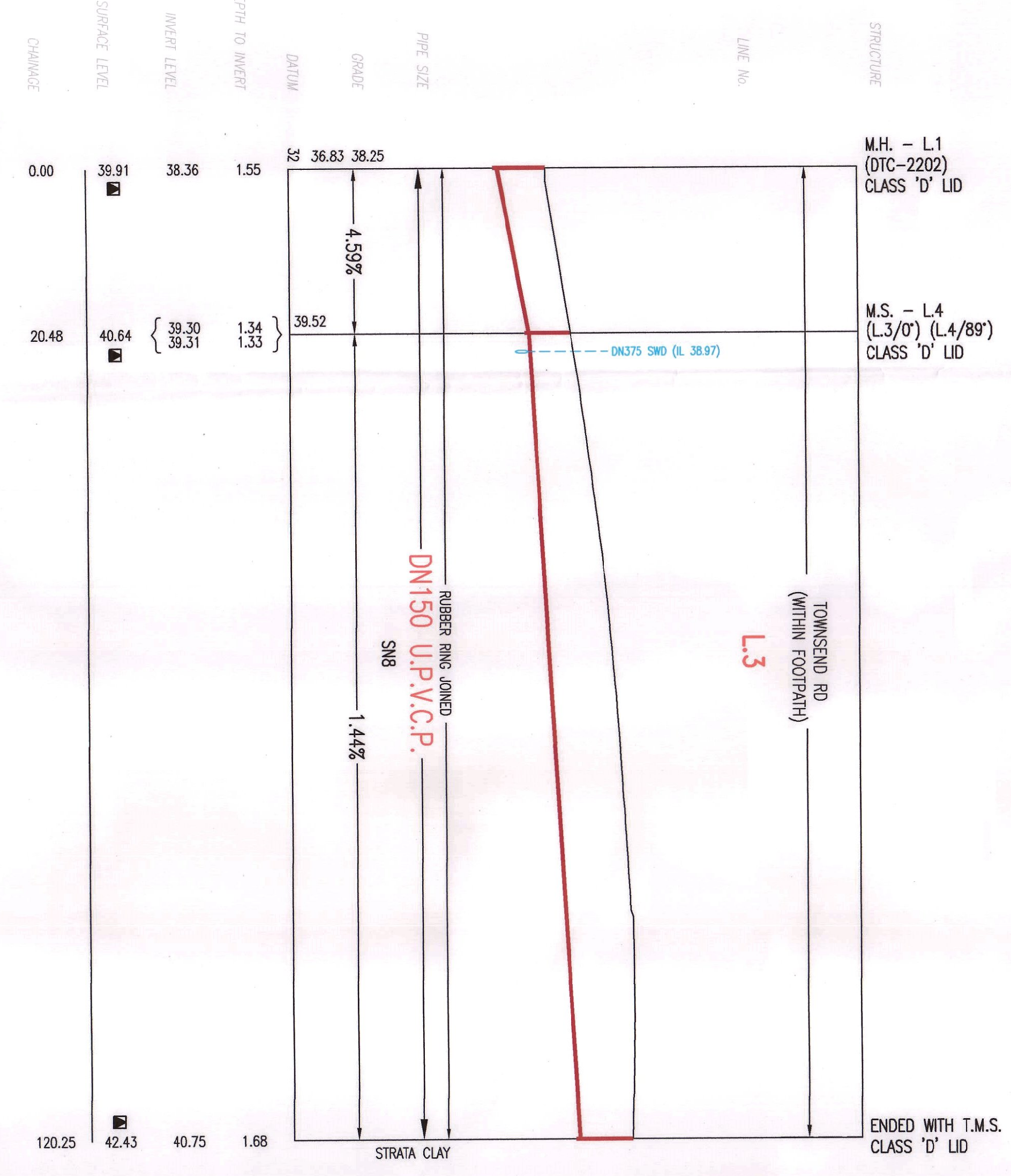
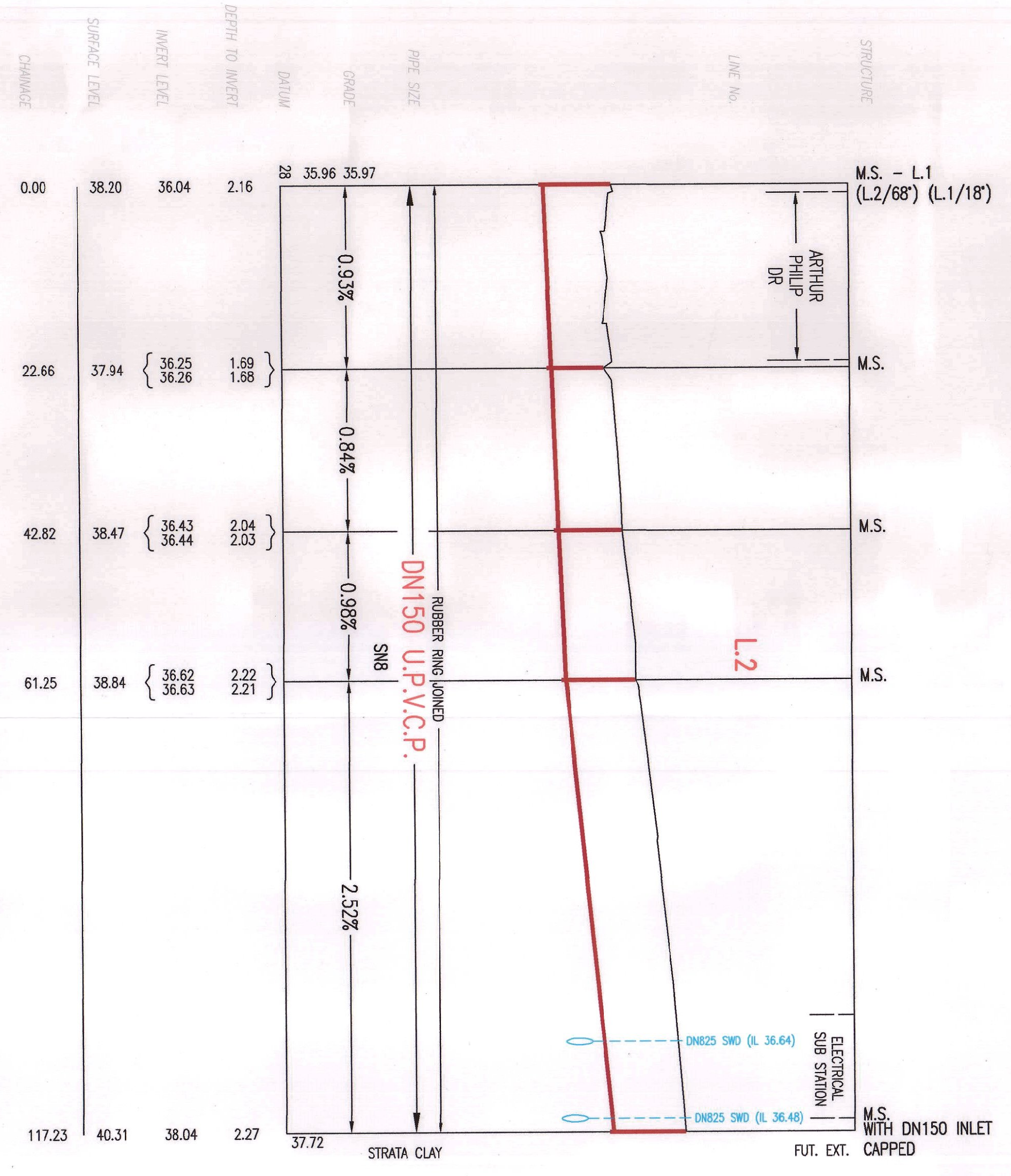
REVIEWED: C.T.

REVIEWED: C.T.

REVIEWED: C.T.

REVIEWED: C.T.

REVIEWED: C.T.



NOTE:
LEVELS HIGHLIGHTED WITH ■ REFER TO THE FUTURE FOOTPATH/ROAD LEVELS
REFER TO NOTE 3 ON SHEET 1. LIDS ARE CONSTRUCTED SO THAT
FUTURE AMENDMENTS NOT REQUIRED.

No.	AMENDMENT DESCRIPTION	BY	DATE
A	ISSUED FOR REVIEW	A.P.	25/02/15
B	ISSUED FOR SMC APPROVAL	A.P.	30/04/15
C	PROPERTY CONNECTION AS PER LEAK TIGHT SPEC.	A.P.	04/08/15
D	AMENDMENTS TO SUT ROAD 3, 4 & 5 REGARDING	A.P.	18/08/15
E	PROPERTY CONNECTION DETAIL AMENDED	J.F.	03/09/15
F	WORK AS CONSTRUCTED	ST	30/11/15

WORK AS CONSTRUCTED CERTIFICATION

DEVELOPER: N&M + RSL PTY. LTD.
DESIGNER: OALCHER PTY. LTD.
CONSTRUCTION: FLUID SERVICES
COMPLETED: 16/10/15
W.A.G. PREPARED: 30/11/15

DESIGNER: OALCHER PTY. LTD.
I CERTIFY THAT THE WORKS HAVE BEEN CONSTRUCTED IN ACCORDANCE WITH THE WORK AS CONSTRUCTED DRAWINGS

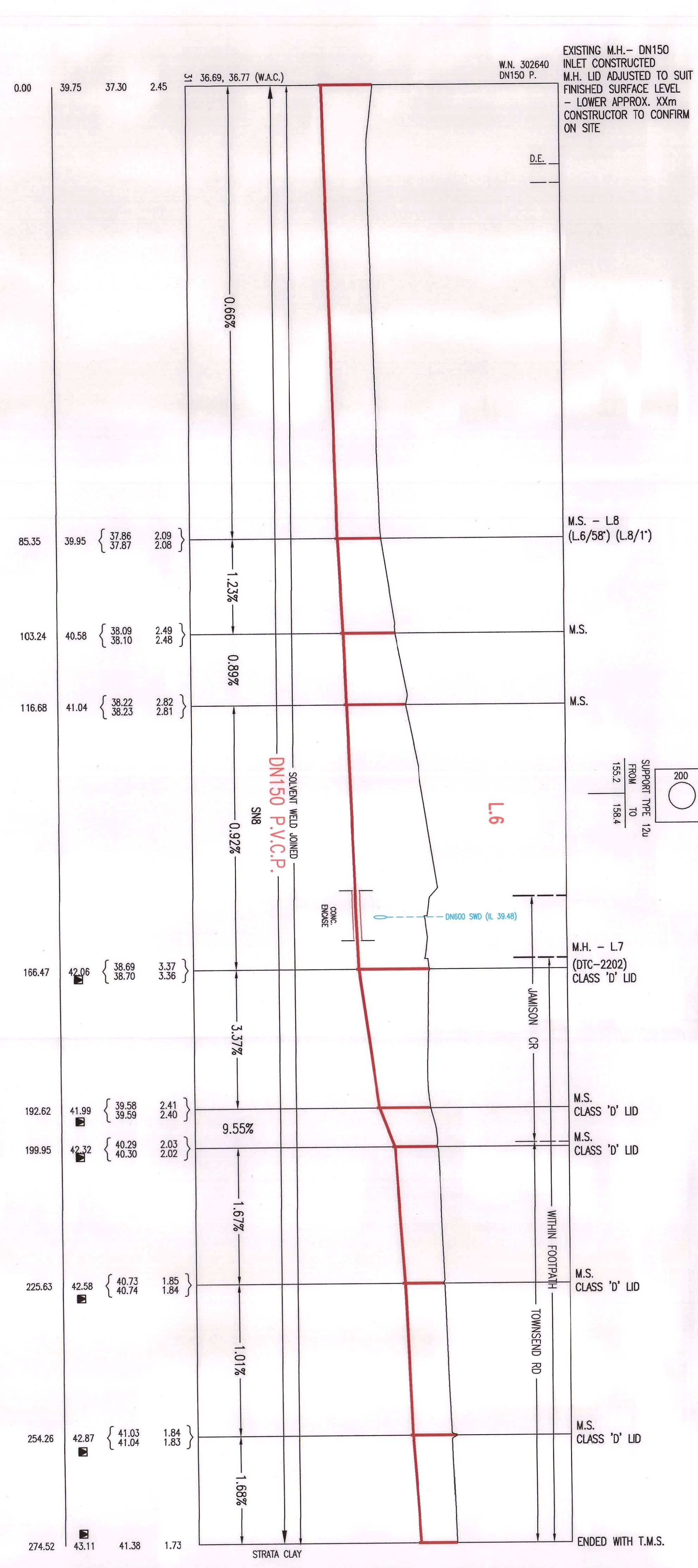
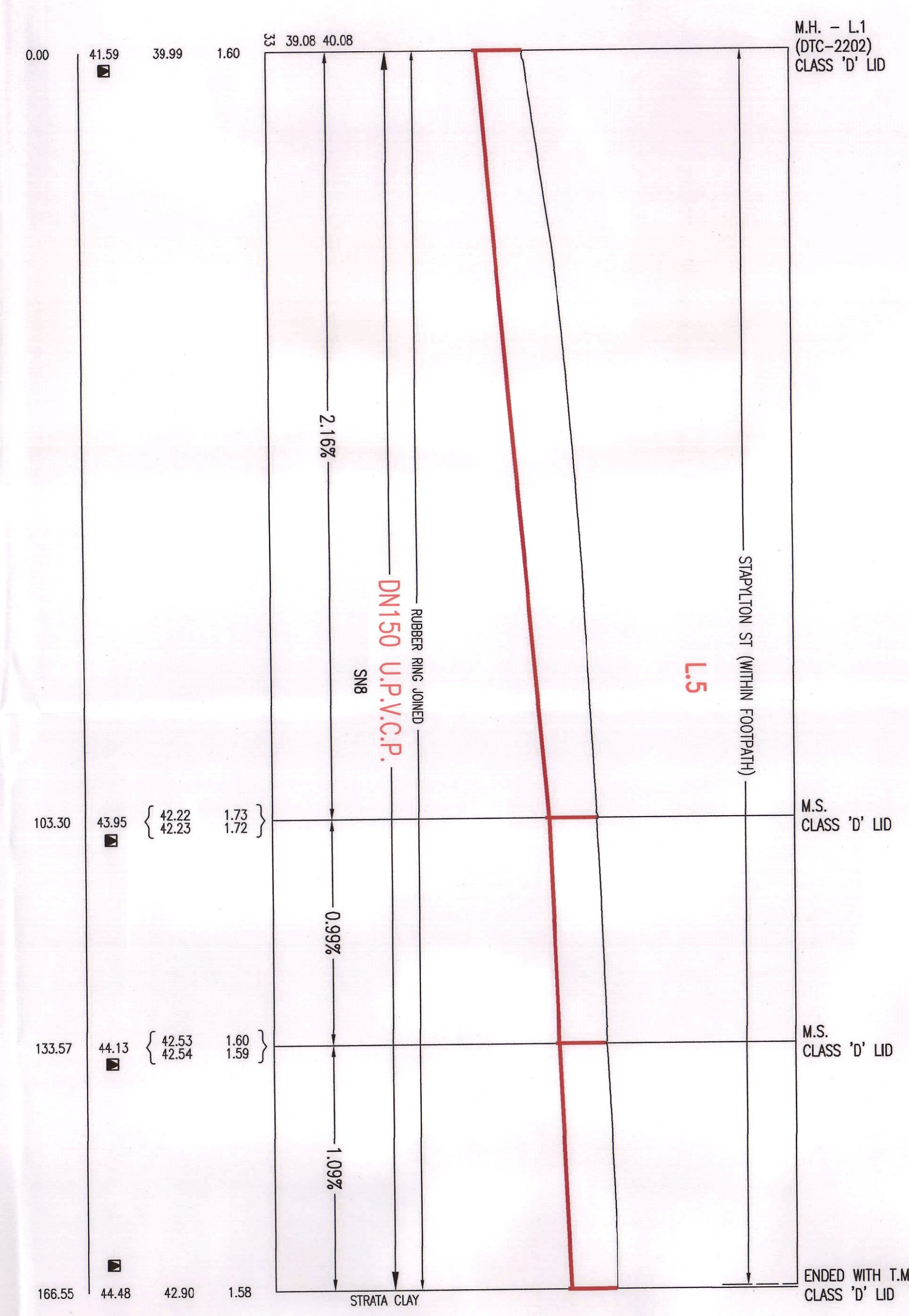
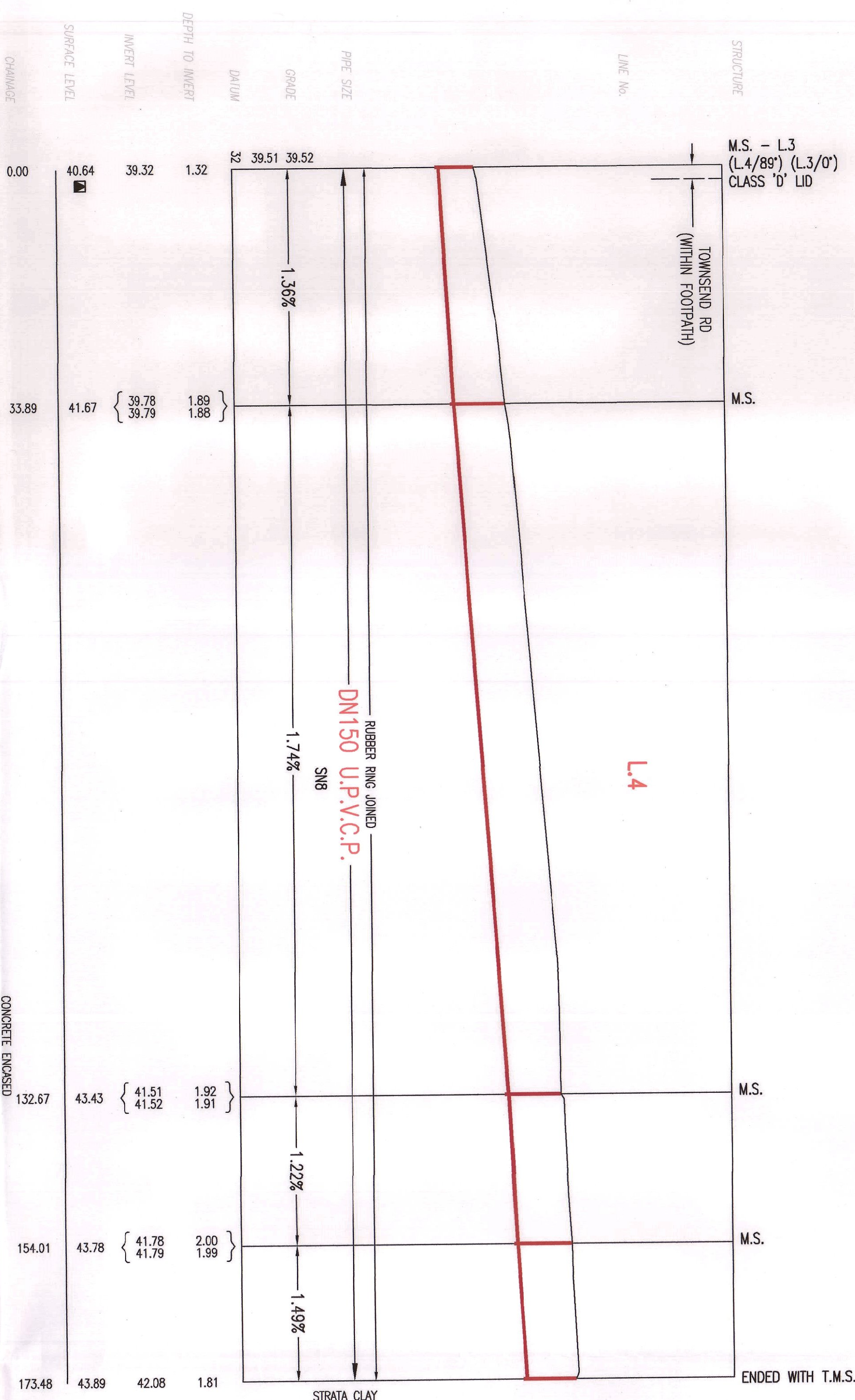
VERIFIED: C.T.
REVIEWED: C.T.
APPROVED: C.T.
ISSUED: 30/11/15

FILE LOCATION: PM127105-0

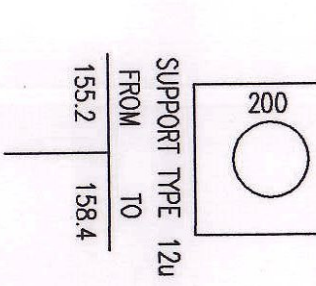
DESIGNED: A.P.

DRAWN: ST

DEVELOPER CONTRACT PLAN
STAGE 3 - YOBARNIE
WORK-AS-CONSTRUCTED



EXISTING M.H. - DN150
INLET CONSTRUCTED
M.H. LID ADJUSTED TO SUIT
FINISHED SURFACE LEVEL
- LOWER APPROX. XXm
CONSTRUCTOR TO CONFIRM
ON SITE



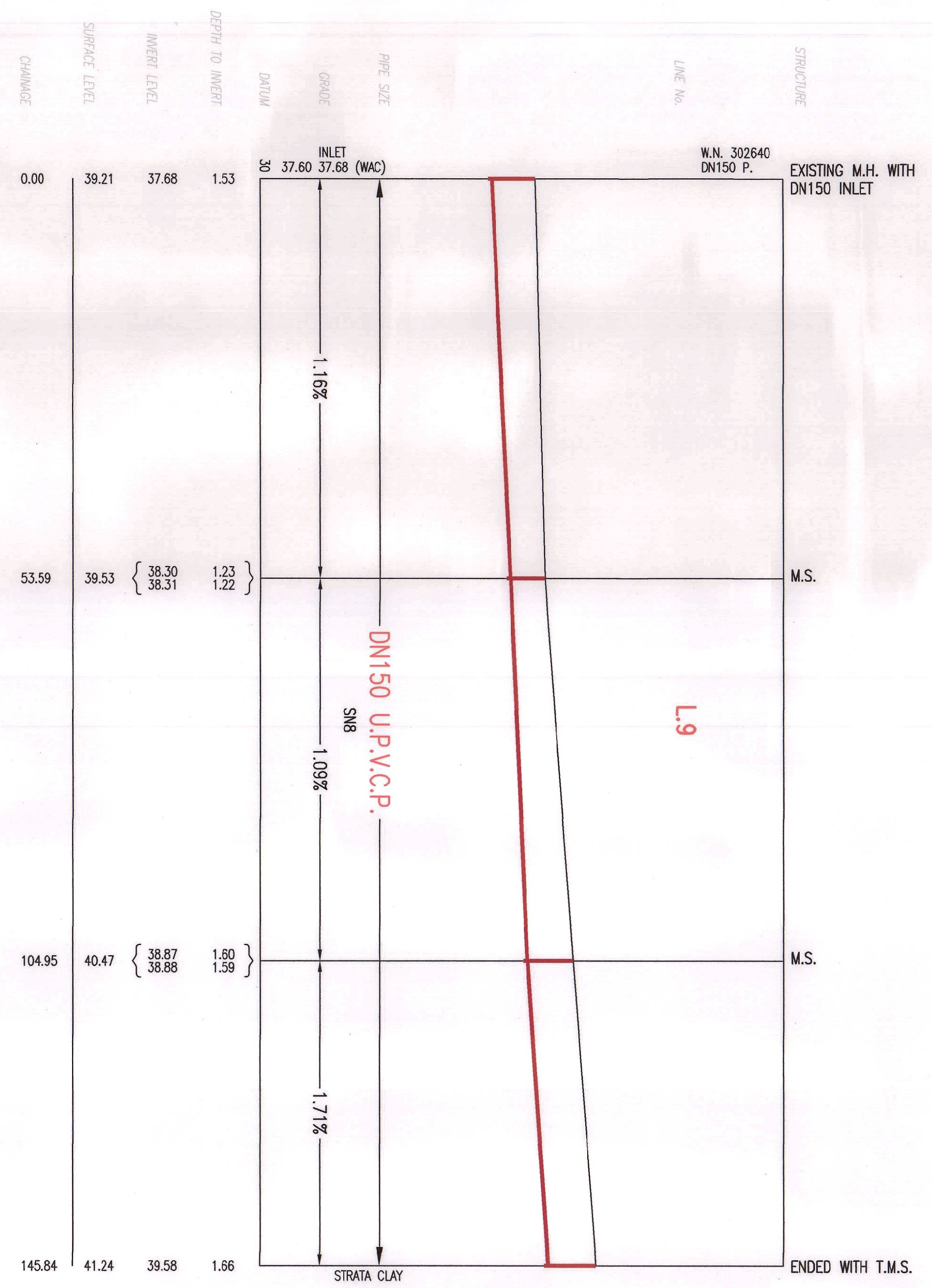
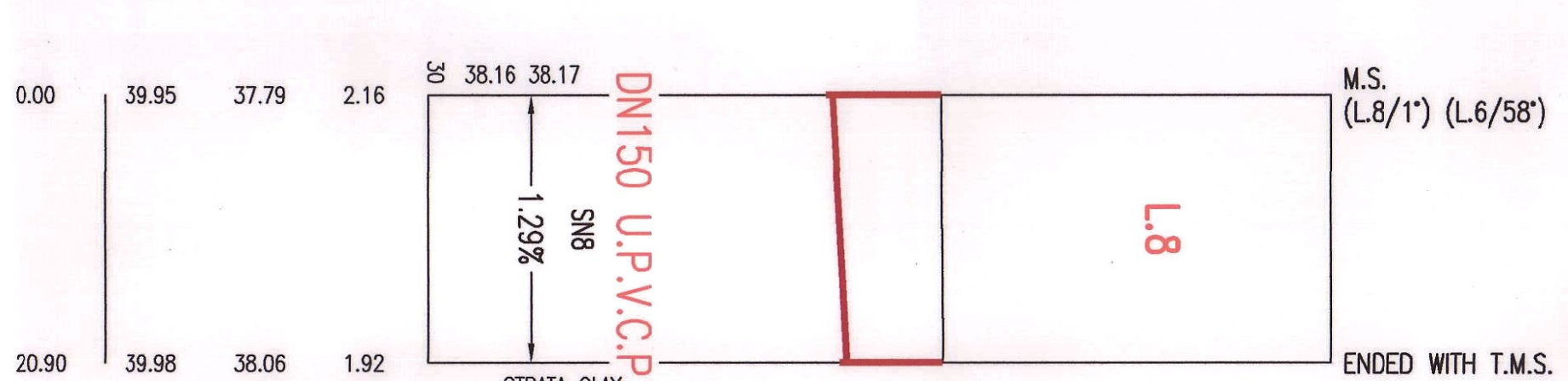
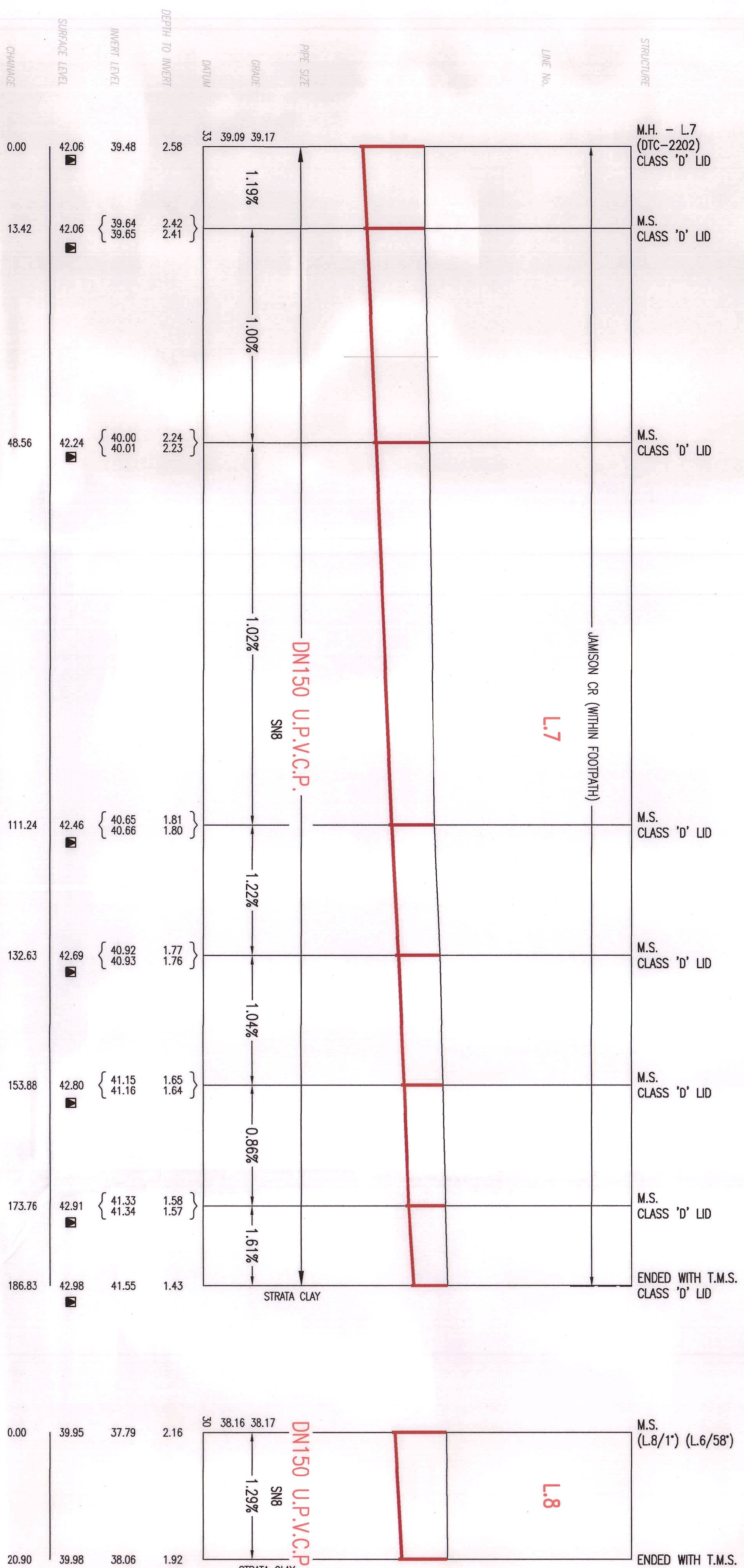
NOTE:
LEVELS HIGHLIGHTED WITH ■ REFER TO THE FUTURE FOOTPATH/ROAD LEVELS
REFER TO NOTE 3 ON SHEET 1. LIDS ARE CONSTRUCTED SO THAT
FUTURE AMENDMENTS NOT REQUIRED.

No.	AMENDMENT DESCRIPTION	DATE
A	ISSUED FOR REVIEW	A.P. 25.02.15
B	ISSUED FOR TENDER	A.P. 24.04.15
C	ISSUED FOR SMC APPROVAL	A.P. 30.04.15
D	PROPERTY CONNECTION AS PER LEAK TIGHT SPEC.	A.P. 04.08.15
E	AMENDMENTS TO SUT ROAD 3, 4 & 5 REGRADING	A.P. 18.08.15
F	PROPERTY CONNECTION DETAIL AMENDED	J.F. 03.09.15
0	WORK AS CONSTRUCTED	ST 30.11.15

WORK AS CONSTRUCTED CERTIFICATION
DESIGNED BY: NOLAN + BSL PTY. LTD.
CHECKED BY: W.S.C. QUACKER PTY. LTD.
CONSTRUCTED BY: FLUID SERVICES
COMPLETED: 27.11.15
W.A.S. PREPARED: 30.11.15

DESIGNER: QUACKER PTY. LTD.
I CERTIFY THAT THE WORKS HAVE BEEN CONSTRUCTED IN ACCORDANCE WITH THE WORK AS CONSTRUCTED DRAWINGS
VERIFIED: C.T.
REVIEWED: C.T.
APPROVED: C.T.
ISSUED: 30.11.15

FILE LOCATION: PM127105-0
DESIGNED: A.P.
DRAWN: ST
VERIFIED: C.T.
REVIEWED: C.T.
APPROVED: C.T.
ISSUED: 30.11.15



NOTE:
 LEVELS HIGHLIGHTED WITH ■ REFER TO THE FUTURE FOOTPATH/ROAD LEVELS
 REFER TO NOTE 3 ON SHEET 1. LIDS ARE CONSTRUCTED SO THAT
 FUTURE AMENDMENTS NOT REQUIRED.

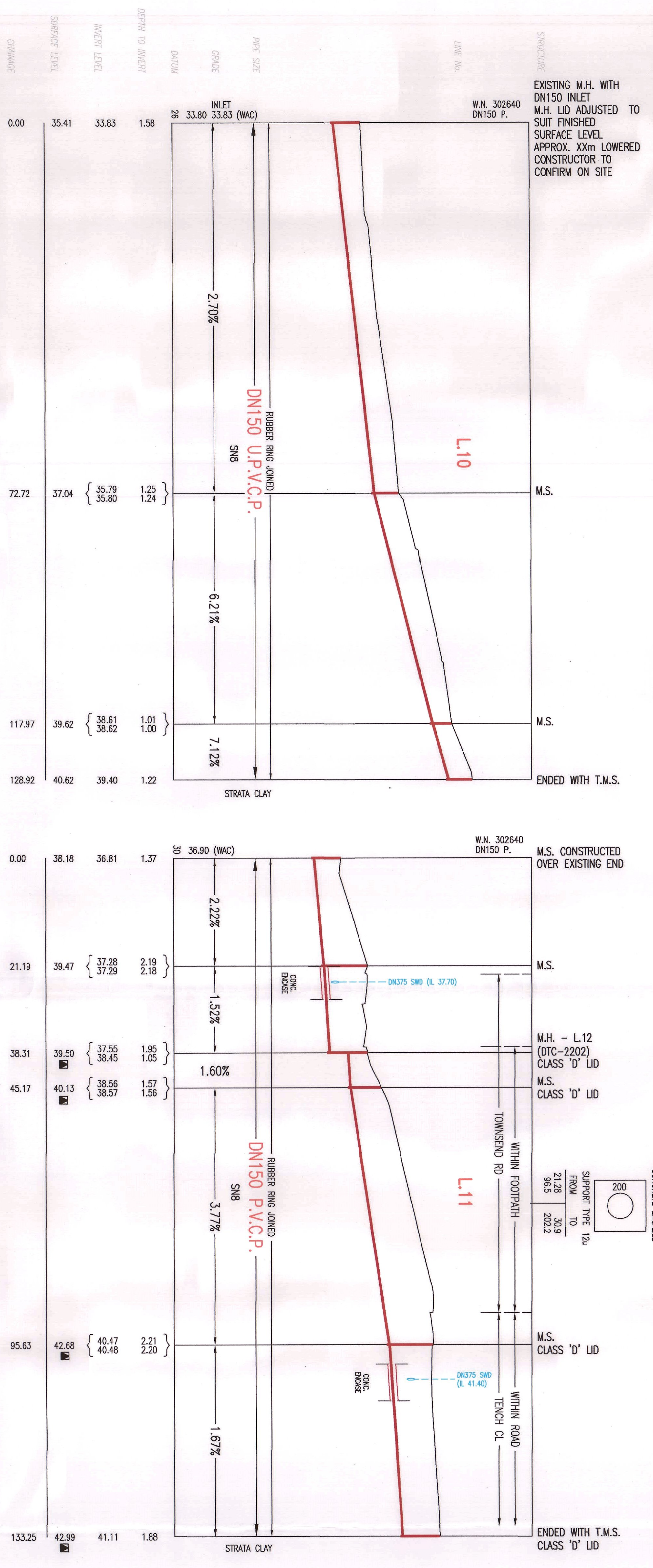
No.	AMENDMENT DESCRIPTION	BY	DATE
0	WORK AS CONSTRUCTED	ST	30.11.15
F	PROPERTY CONNECTION DETAIL AMENDED	J.F.	03.09.15
E	AMENDMENTS TO SHT ROAD 3, 4 & 5 REPAIRING	A.P.	18.08.15
D	PROPERTY CONNECTION AS PER LEAK TIGHT SPEC	A.P.	04.08.15
C	ISSUED FOR SMC APPROVAL	A.P.	30.04.15
B	ISSUED FOR TENDER	A.P.	24.04.15
A	ISSUED FOR REVIEW	A.P.	25.02.15

WORK AS CONSTRUCTED CERTIFICATION
 DEVELOPER: N&J + RSL PTY. LTD.
 W.S.C.: OALCHER PTY. LTD.
 CONSTRUCTOR: FLUID SERVICES
 COMPLETED: 16.10.15
 W.A.C. PREPARED: 30.11.15
 DESIGNER: OALCHER PTY. LTD.
 I CERTIFY THAT THE WORKS HAVE BEEN CONSTRUCTED IN ACCORDANCE WITH THE WORK AS CONSTRUCTED DRAWINGS

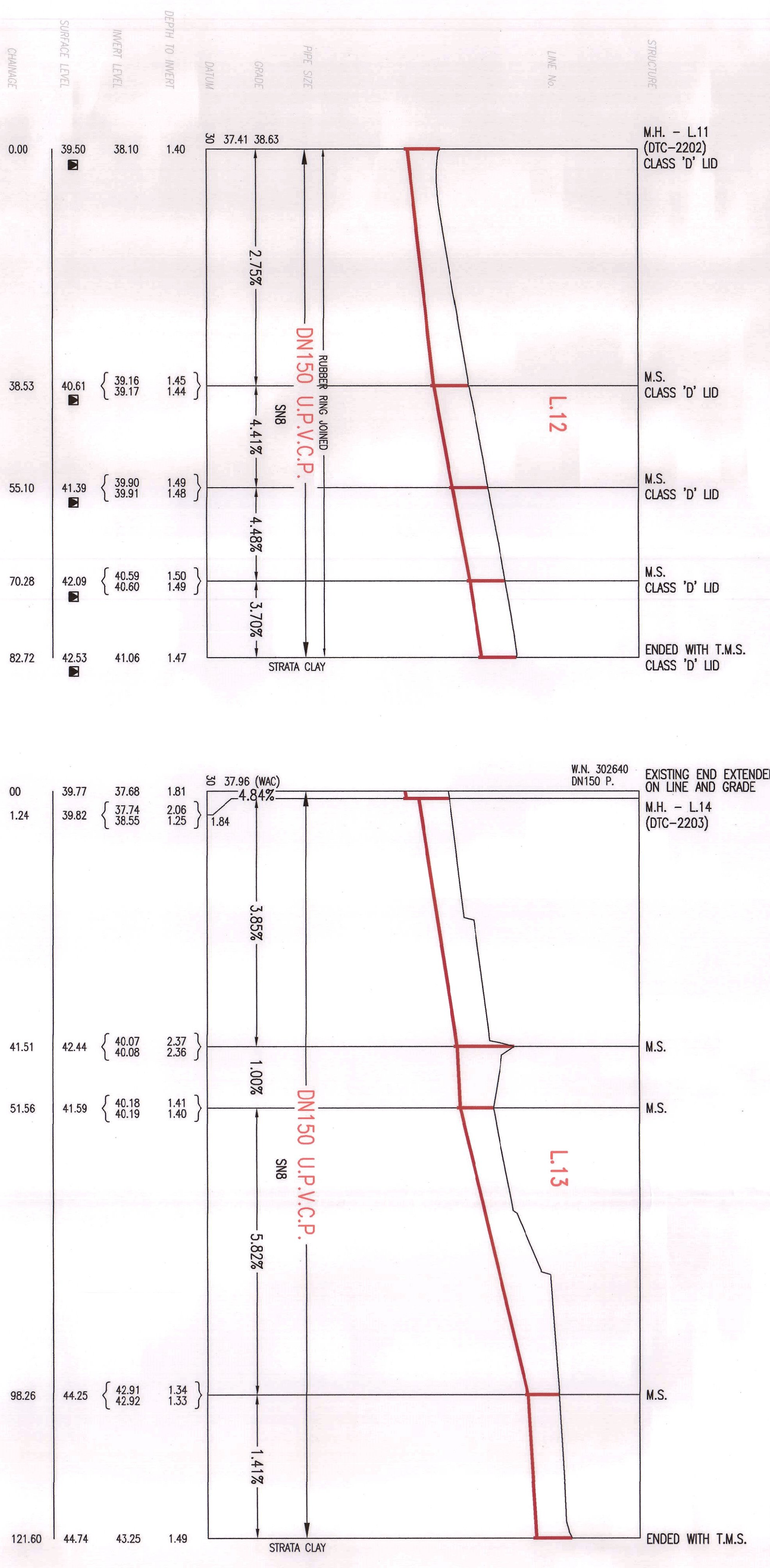
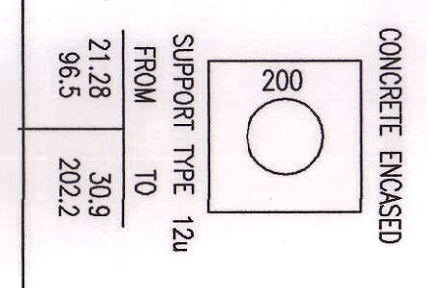
SYDNEY WATER
 Case No. 143022WVW / SHT 6 OF 8 SHTS.

FOR DETAILS OF SERVICES SEE SHEET 1
 SYDNEY WATER CORPORATION
 APPROVED: C.T. ISSUED: 30.11.15

FILE LOCATION: PM127105-0
 DESIGNED: A.P.
 DRAFTER: ST
 VERIFIED: C.T.
 REVIEWED: C.T.



EXISTING M.H. WITH DN150 INLET M.H. LID ADJUSTED TO SUIT FINISHED SURFACE LEVEL APPROX. 30m LOWERED CONSTRUCTOR TO CONFIRM ON SITE



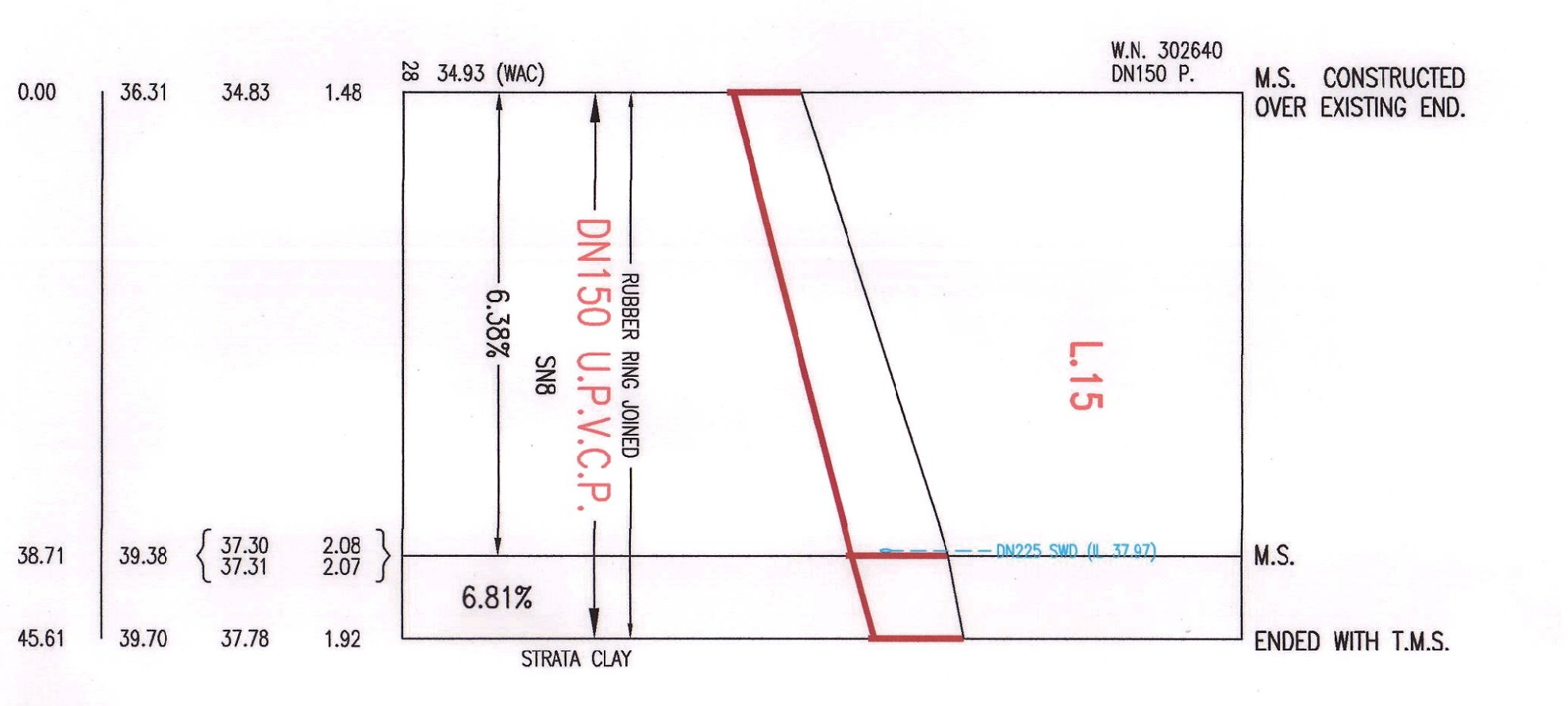
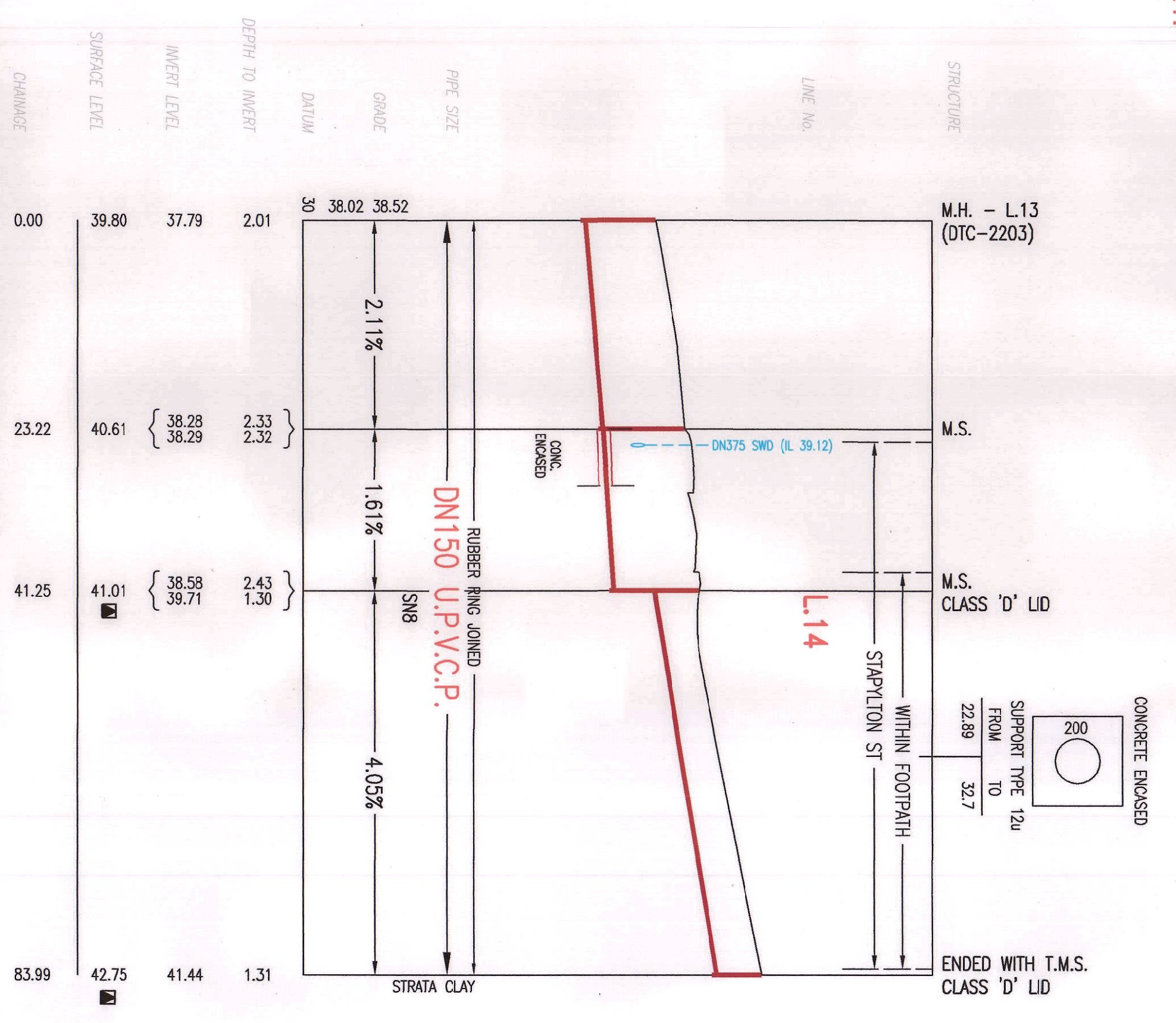
EXISTING END EXTENDED ON LINE AND GRADE M.H. - L.14 (DTC-2203)

NOTE:
LEVELS HIGHLIGHTED WITH ■ REFER TO THE FUTURE FOOTPATH/ROAD LEVELS REFER TO NOTE 3 ON SHEET 1. LIDS ARE CONSTRUCTED SO THAT FUTURE AMENDMENTS NOT REQUIRED.

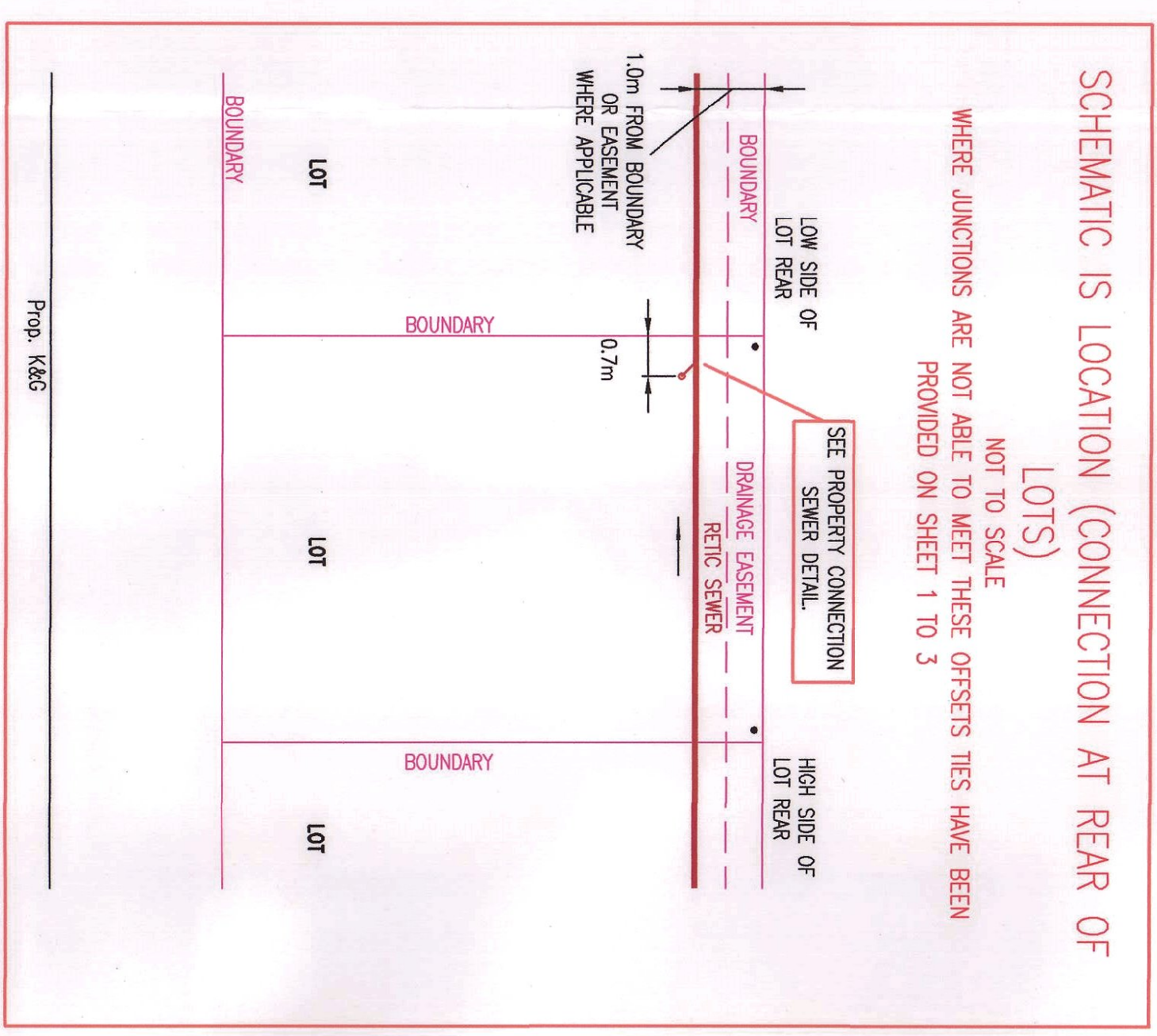
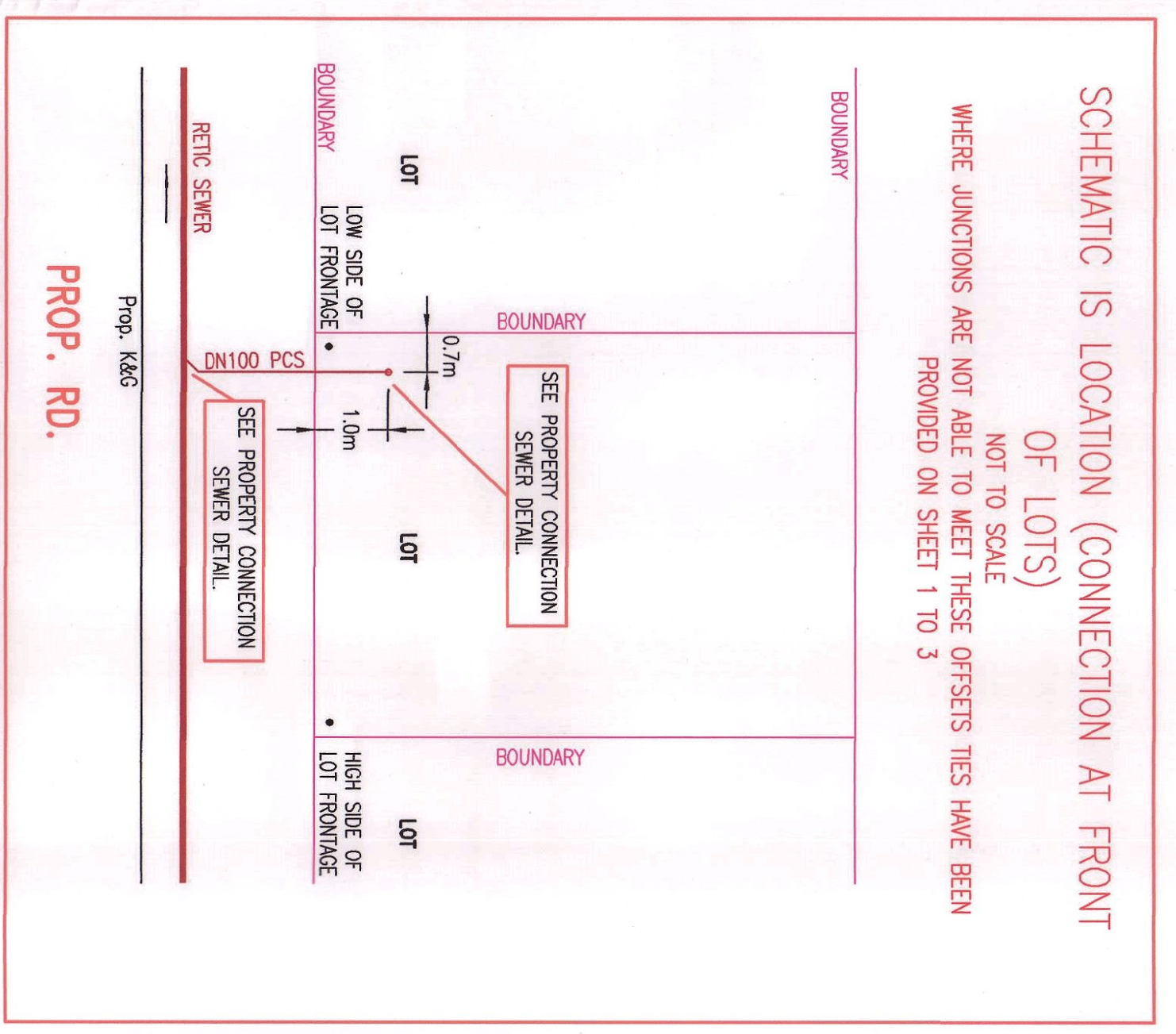
No.	AMENDMENT DESCRIPTION	BY	DATE
0	WORK AS CONSTRUCTED	ST	30.11.15
F	PROPERTY CONNECTION DETAIL AMENDED	J.F.	03.03.15
E	AMENDMENTS TO SITT ROAD 3, 4 & 5 REGARDING A.P.	A.P.	18.08.15
D	PROPERTY CONNECTION AS PER LEAK TIGHT SPEC.	A.P.	04.03.15
C	ISSUED FOR SMC APPROVAL	A.P.	30.04.15
B	ISSUED FOR TENDER	A.P.	24.04.15
A	ISSUED FOR REVIEW	A.P.	25.02.15

WORK AS CONSTRUCTED CERTIFICATION

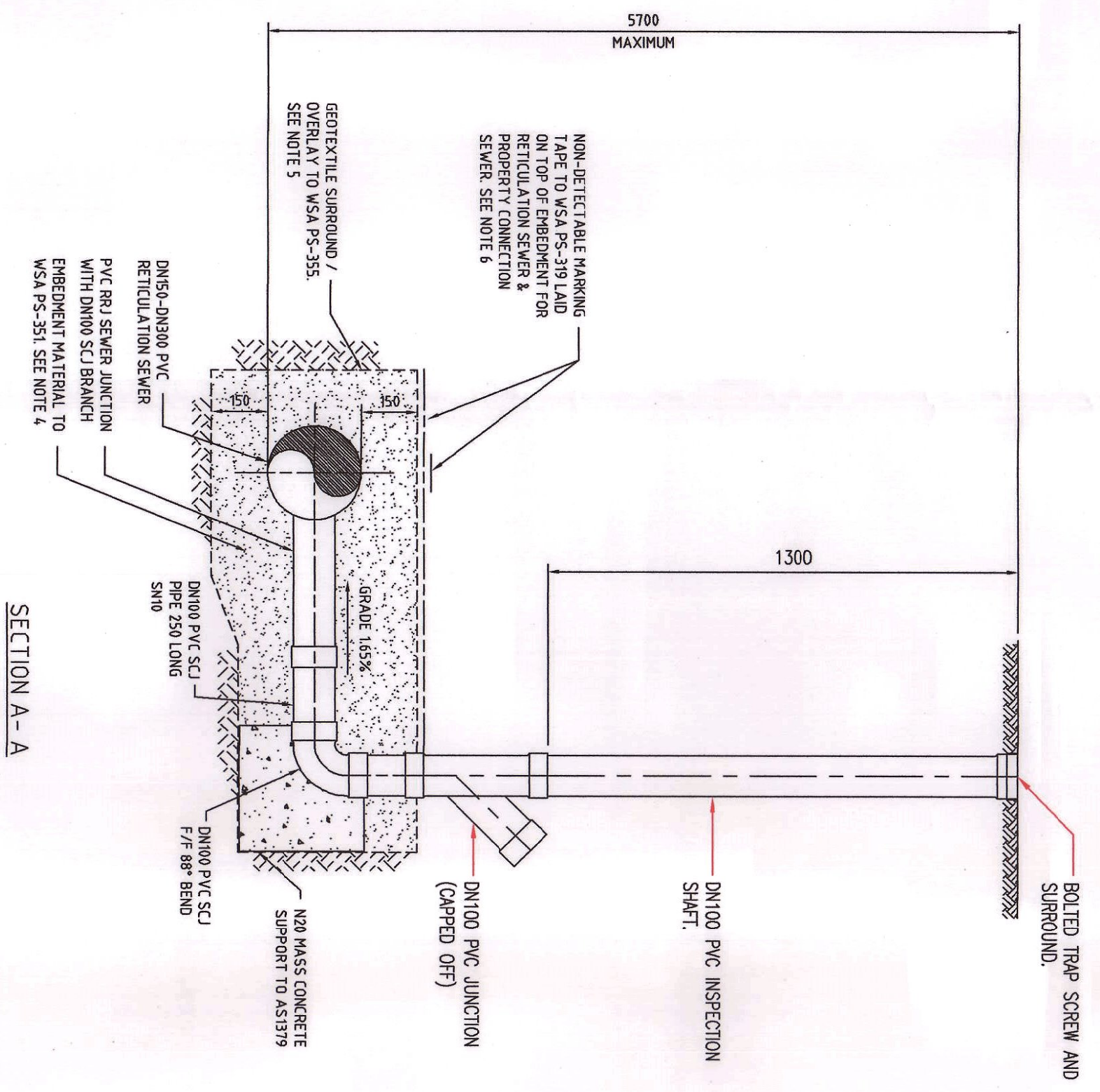
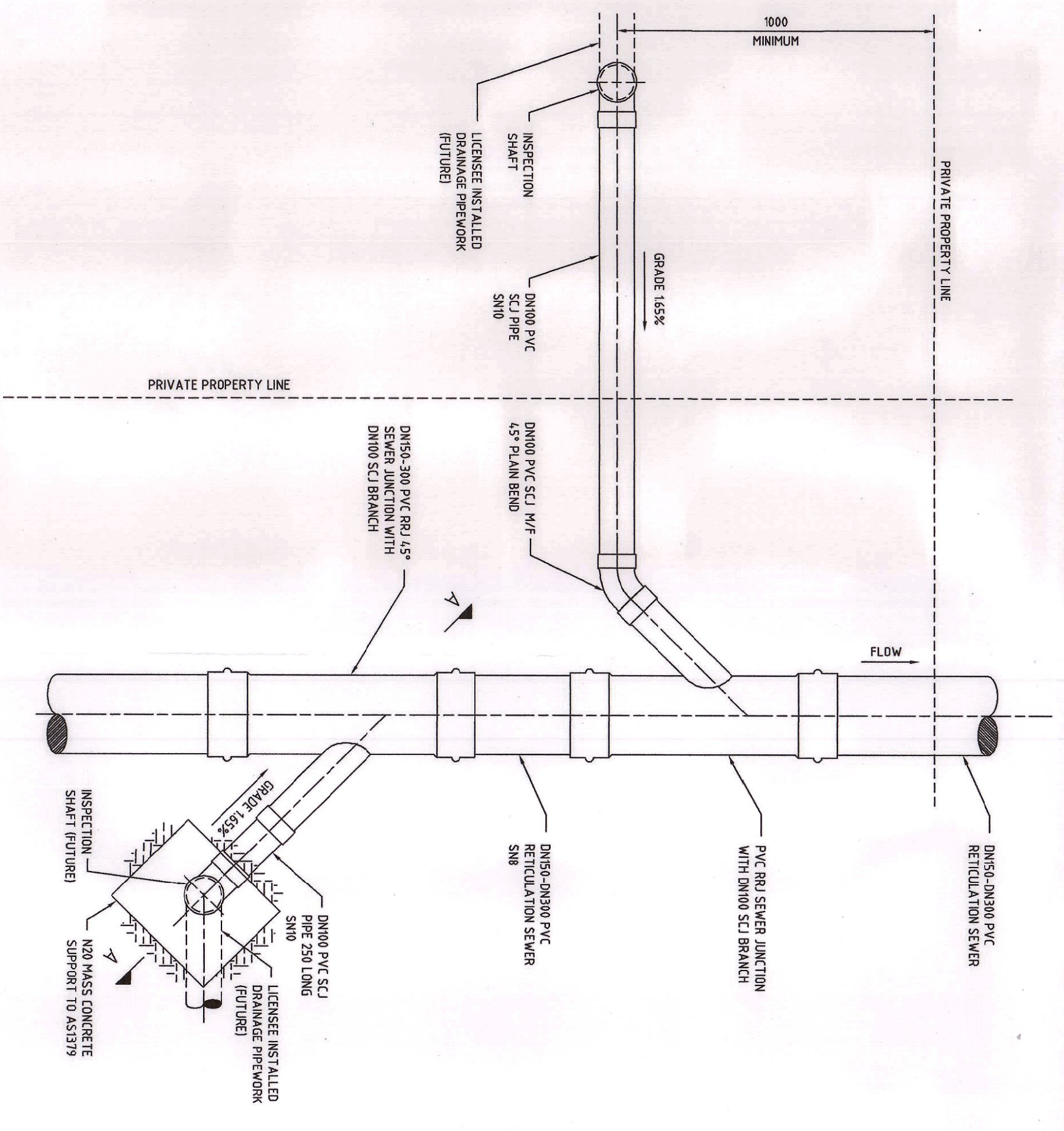
DEVELOPER: NSW & PSU, PTY. LTD.
 DESIGNER: DALOHEK, PTY. LTD.
 VERIFIED: C.T.
 APPROVED: C.T.
 SYDNEY WATER CORPORATION
 Case No. 143022WW | SHT 7 OF 8 SHTS.



NOTE:
LEVELS HIGHLIGHTED WITH ■ REFER TO THE FUTURE FOOTPATH/ROAD LEVELS
REFER TO NOTE 3 ON SHEET 1. LIDS ARE CONSTRUCTED SO THAT
FUTURE AMENDMENTS NOT REQUIRED.



DEVELOPER CONTRACT PLAN
STAGE 3 - YOBARNIE
WORK-AS-CONSTRUCTED



DN100 PVC-U PROPERTY CONNECTION SEWER DETAIL
(NOT TO SCALE)

FILE LOCATION: PM127105-0

DESIGNED: A.P.

DRAWN: ST

VERIFIED: C.T.

REVIEWED: C.T.

APPROVED: C.T.

ISSUED: 30.11.15

No.	AMENDMENT DESCRIPTION	BY	DATE
0	WORK AS CONSTRUCTED	ST	30.11.15
F	PROPERTY CONNECTION DETAIL AMENDED	J.F.	03.09.15
E	AMENDMENTS TO SIFT ROAD 3, 4 & 5 REGARDING	A.P.	18.03.15
D	PROPERTY CONNECTION AS PER LEAK TIGHT SPEC	A.P.	04.08.15
C	ISSUED FOR SMC APPROVAL	A.P.	30.04.15
B	ISSUED FOR TENDER	A.P.	24.04.15
A	ISSUED FOR REVIEW	A.P.	25.02.15

WORK AS CONSTRUCTED CERTIFICATION
 DEVELOPER: NAW + PSL PTY. LTD.
 W.S.C.: DALCHER PTY. LTD.
 CONSTRUCTOR: FLUID SERVICES
 COMPLETED: 16.10.15
 W.A.C. PREPARED: 30.11.15
 DESIGNER: DALCHER PTY. LTD.
 I CERTIFY THAT THE WORKS HAVE BEEN CONSTRUCTED IN ACCORDANCE WITH THE WORK AS CONSTRUCTED DRAWINGS

SYDNEY WATER CORPORATION
 Case No. 143022WW | SHT 8 OF 8 SHTS.
 FOR DETAILS OF SERVICES SEE SHEET 1