

- DESIGNER AND WATER SERVICES COORDINATOR:
DALCHECK PTY LTD (CERTIFIED No.299)
77 UNION RD, PENRITH NSW 2750
PH. No. (02) 4722 8181
- FOR:
NRW & RSL PTY LTD
C/- BUILDER NSW PTY LTD
ATTN: ANDREW FLAHERTY
SUITE 4, LEVEL 1, 8-10 CASTLEBRACH STREET, PENRITH NSW 2750
PH. NO: 0419 474 960
- THE WORKS AND MATERIALS ARE IN ACCORDANCE WITH THE WATER RETICULATION CODE OF AUSTRALIA (NSA 03-2011-3.1) INCLUDING THE STONEY WATER SUPPLEMENT AND APPENDICES (2014)
- MAN WAS LAD GENERALLY AT 2.6M WITH STANDARD COVER
- ALL EXCAVATION, SHORING, ECKOATION AND STABILITY OF ADJACENT STRUCTURES/SERVICES/DEWELLINGS WAS THE RESPONSIBILITY OF THE CONSTRUCTOR.
- PRECAUTIONS MAY BE NECESSARY IN THE VICINITY OF SUB-STATION EARTHINGS.
- ALL INFORMATION TAKEN FROM THE FOLLOWING PLANS SUPPLIED BY NRW:
DRAINING BASE 3D AND SMD: REBANK-SEPT MFG-BEM & UTI DRG PDM STRINGS 1504-10 (SUPPLIED 13.04.2015)
CONL SET PER (6593): REBANK-SEPT MFG-CAR 1768 OC UTI CONL PLANS-150410 (SUPPLIED 13.04.2015)
DETAILS ALONG GROSS VALE ROAD BASED ON: NH RICH - DETAILED SURVEY UPDATE 230414 (SUPPLIED 2014)
ENGINEERING PLANS GROSS VALE ROAD: 91640C PERMANENT BASE (SUPPLIED 2013)
- THE MINIMUM NUMBER OF FIELD COMPACTION TESTS CONDUCTED TO SATISFY THE WATER SUPPLY CODE OF AUSTRALIA ARE:
PIPE EMBARKMENT ZONE: 14 TESTS CONDUCTED
(UNLESS ALL CONDITIONS OF CLAUSE 19.3.4.1 ARE MET & DOCUMENTATION IS PROVIDED)
TRENCH FILL ZONE (TRAFFICABLE): 0 TESTS CONDUCTED (SEE NOTE 13)
TRENCH FILL ZONE (NON TRAFFICABLE): 14 TESTS CONDUCTED
- TRENCH FILL ZONE (INCLUDING PROPERTY SERVICES) - TOTAL 51 TESTS CONDUCTED
- CONSTRUCTORS ASSURED THAT WORKS ARE CONSTRUCTED IN ACCORDANCE WITH STONEY WATERS DEMAND TO EXHIBIT DRAININGS:
- FOR HORIZONTAL BENDS TYPE 1/TYPE 2 DTC-1110 (REV.A 31.01.13) OR DTC-1111 (REV.B 29.02.12)
- FOR TAPERS DTC-1112 (REV.B 29.02.12)
- FOR TEES DTC-1113 (REV.B 29.02.12) (THRLST BLOCK TYPE DEPENDING ON GROUND CONDITIONS AND DISTANCE TO OTHER SERVICES)
- ALL ROAD CROSSINGS OF PROPOSED AND FUTURE ROADS WERE BACKFILLED WITH SAND/CEMENT (THE SAND/CEMENT RATIO IS 20:1)
- ALL PROPERTY MAIN TO METRO SERVICES ARE CONSTRUCTED TO STONEY WATERS INSTALLATION REQUIREMENTS BY A LICENSED PLUMBER AND ACCREDITED BOLLER. THE WORKS ARE INSTALLED IN ACCORDANCE WITH THE CURRENT STONEY WATER PROPERTY SERVICE (MAIN TO METER) INSTALLATIONS TECHNICAL REQUIREMENTS, NSW CODE OF PRACTICE FOR PLUMBING AND DRAINAGE, AND AS/NZ 3500.
- ALL REBOUND SURFACE FITTINGS AND INDICATOR PLATES WERE RECOVERED.

SERVICES CROSSING TABLE - MAIN TO BE LAID OVER UNLESS NOTED OTHERWISE

CROSSING SERVICE	SERVICE SIZE	FW COVER (m)	SW COVER (m)	CLEARANCE (m)	REFER TO DTC DRAWING No.
A	SMD DN625	DN100	0.66	1.40	0.15
B	SMD DN375	DN100	0.82	0.52	0.15
C	SMD DN825	DN200	2.19	0.50	1.29
			2.03	0.50	1.13
			2.70	1.80	N/A
D	SMD DN375	DN100	2.65	0.60	1.90
E	SMD DN625	DN100	1.85	0.60	1.10
F	SMD DN375	DN100	2.06	0.60	N/A
G	SMD DN675	DN100	2.06	0.60	1.31
H	SMD DN450	DN100	2.14	0.60	N/A
I	SMD DN375	DN100	1.02	0.60	1.39
J	SMD DN375	DN100	1.12	0.60	0.27
K	SMD DN375	DN100	0.66	0.55	N/A
L	SMD DN375	DN100	0.66	0.55	0.15
M	SMD DN300	DN100	0.78	0.48	N/A
N	SMD DN375	DN100	0.77	0.47	0.15

1. DESIGNER AND WATER SERVICES COORDINATOR:
DALCHECK PTY LTD (CERTIFIED No.299)
77 UNION RD, PENRITH NSW 2750
PH. No. (02) 4722 8181
- FOR:
NRW & RSL PTY LTD
C/- BUILDER NSW PTY LTD
ATTN: ANDREW FLAHERTY
SUITE 4, LEVEL 1, 8-10 CASTLEBRACH STREET, PENRITH NSW 2750
PH. NO: 0419 474 960
- THE WORKS AND MATERIALS ARE IN ACCORDANCE WITH THE WATER RETICULATION CODE OF AUSTRALIA (NSA 03-2011-3.1) INCLUDING THE STONEY WATER SUPPLEMENT AND APPENDICES (2014)
- MAN WAS LAD GENERALLY AT 2.6M WITH STANDARD COVER
- ALL EXCAVATION, SHORING, ECKOATION AND STABILITY OF ADJACENT STRUCTURES/SERVICES/DEWELLINGS WAS THE RESPONSIBILITY OF THE CONSTRUCTOR.
- PRECAUTIONS MAY BE NECESSARY IN THE VICINITY OF SUB-STATION EARTHINGS.
- ALL INFORMATION TAKEN FROM THE FOLLOWING PLANS SUPPLIED BY NRW:
DRAINING BASE 3D AND SMD: REBANK-SEPT MFG-BEM & UTI DRG PDM STRINGS 1504-10 (SUPPLIED 13.04.2015)
CONL SET PER (6593): REBANK-SEPT MFG-CAR 1768 OC UTI CONL PLANS-150410 (SUPPLIED 13.04.2015)
DETAILS ALONG GROSS VALE ROAD BASED ON: NH RICH - DETAILED SURVEY UPDATE 230414 (SUPPLIED 2014)
ENGINEERING PLANS GROSS VALE ROAD: 91640C PERMANENT BASE (SUPPLIED 2013)
- THE MINIMUM NUMBER OF FIELD COMPACTION TESTS CONDUCTED TO SATISFY THE WATER SUPPLY CODE OF AUSTRALIA ARE:
PIPE EMBARKMENT ZONE: 14 TESTS CONDUCTED
(UNLESS ALL CONDITIONS OF CLAUSE 19.3.4.1 ARE MET & DOCUMENTATION IS PROVIDED)
TRENCH FILL ZONE (TRAFFICABLE): 0 TESTS CONDUCTED (SEE NOTE 13)
TRENCH FILL ZONE (NON TRAFFICABLE): 14 TESTS CONDUCTED
- TRENCH FILL ZONE (INCLUDING PROPERTY SERVICES) - TOTAL 51 TESTS CONDUCTED
- CONSTRUCTORS ASSURED THAT WORKS ARE CONSTRUCTED IN ACCORDANCE WITH STONEY WATERS DEMAND TO EXHIBIT DRAININGS:
- FOR HORIZONTAL BENDS TYPE 1/TYPE 2 DTC-1110 (REV.A 31.01.13) OR DTC-1111 (REV.B 29.02.12)
- FOR TAPERS DTC-1112 (REV.B 29.02.12)
- FOR TEES DTC-1113 (REV.B 29.02.12) (THRLST BLOCK TYPE DEPENDING ON GROUND CONDITIONS AND DISTANCE TO OTHER SERVICES)
- ALL ROAD CROSSINGS OF PROPOSED AND FUTURE ROADS WERE BACKFILLED WITH SAND/CEMENT (THE SAND/CEMENT RATIO IS 20:1)
- ALL PROPERTY MAIN TO METRO SERVICES ARE CONSTRUCTED TO STONEY WATERS INSTALLATION REQUIREMENTS BY A LICENSED PLUMBER AND ACCREDITED BOLLER. THE WORKS ARE INSTALLED IN ACCORDANCE WITH THE CURRENT STONEY WATER PROPERTY SERVICE (MAIN TO METER) INSTALLATIONS TECHNICAL REQUIREMENTS, NSW CODE OF PRACTICE FOR PLUMBING AND DRAINAGE, AND AS/NZ 3500.
- ALL REBOUND SURFACE FITTINGS AND INDICATOR PLATES WERE RECOVERED.

- ⊕ 1.5m WIDE EASEMENT FOR DRAINAGE
- ⊘ 3m WIDE EASEMENT FOR DRAINAGE
- SUBSTATION EASEMENTS

No.	AMENDMENT DESCRIPTION	BY	DATE
E	TAPPING OFFSET AMENDED	J.F.	03.08.15
D	TAPPING LOCATIONS AMENDED	A.P.	17.08.15
C	ISSUED FOR SMC APPROVAL	A.P.	30.04.15
B	ISSUED FOR TENDER	A.P.	24.04.15
A	ISSUES FOR REVIEW	A.P.	25.02.15

PLAN TO BE READ IN CONJUNCTION WITH CURRENT STONEY WATER STANDARDS

PREPARED BY: NSW & RSL PTY LTD
DESIGNED BY: DALCHECK PTY LTD
CHECKED BY: J. FLAHERTY
DATE: 03.12.15

UTILITIES

SCHEMATIC	TYPE	DATE	REF.
STONEY WATER SMD	S	30.04.15	W/C/PROVA
STONEY WATER SMD	S	30.04.15	DESIGN
STONEY WATER SMD	S	30.04.15	ENG.

WORKS AS CONSTRUCTED CERTIFICATION

DESIGNER: NRW & RSL PTY LTD
CONSTRUCTOR: DALCHECK PTY LTD
DATE: 03.12.15

PIPE SCHEDULE

SIZE	TYPE	CLASS	LENGTH	PIPE JOINT METHOD/NOTES
100	M.P.V.C	PN16	1103.24	
100	D.I.C.L	PN5	5.0	DTC-1124
200	M.P.V.C	PN16	303.23	

BOUNDARY TROOPS REQUIRED

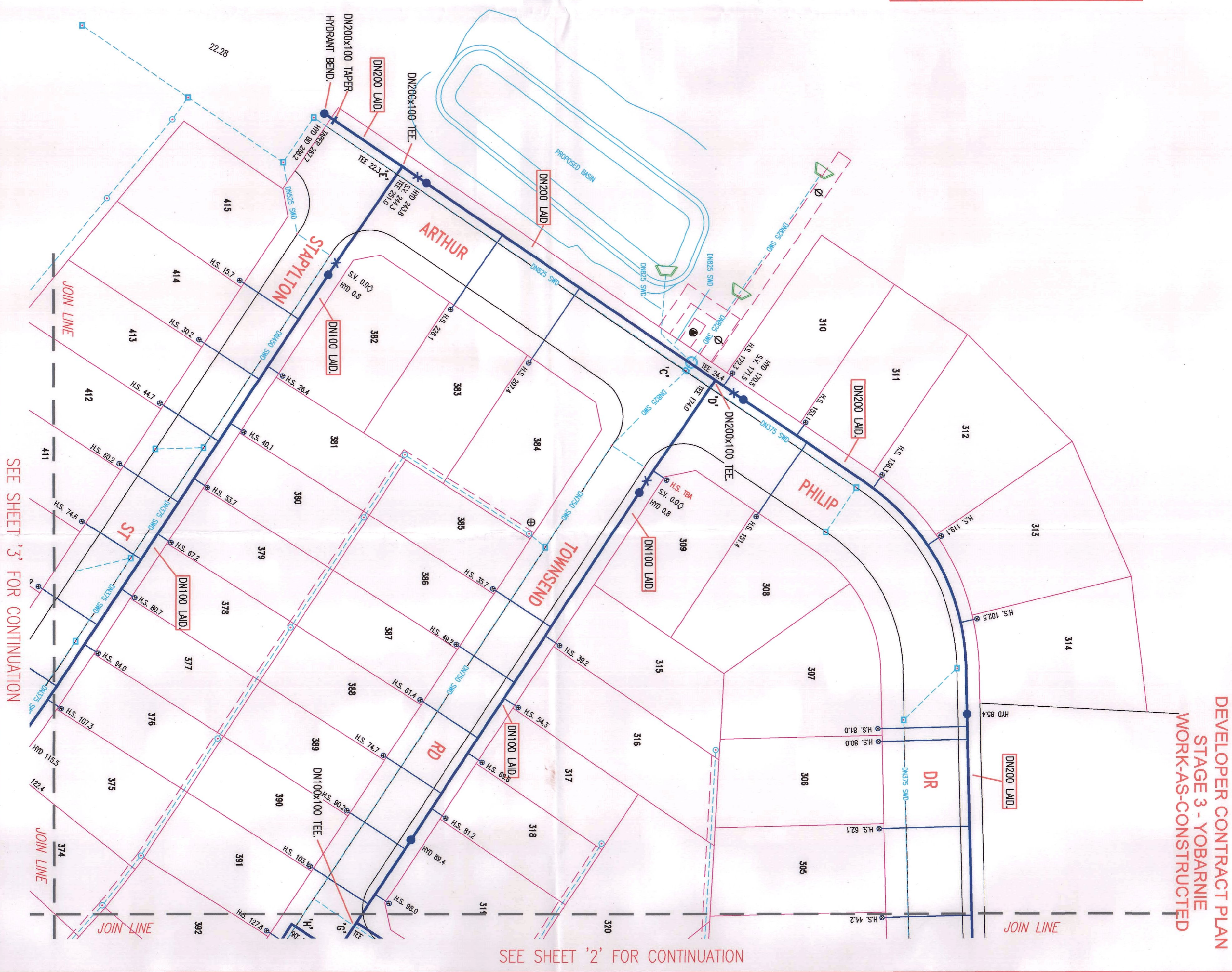
DESIGNED: A.P.
DRAWN: ST
VERIFIED: C.T.

NO AMENDMENTS ARE TO BE MADE TO THIS PLAN WITHOUT REFERENCE TO STONEY WATER. THIS PLAN IS NOT NECESSARILY UP TO DATE OR CORRECT AND STONEY WATER ACCEPTS NO RESPONSIBILITY.

UB DIRECTORY: MAP 63/114 45th Edition
SHEET: 1 OF 3
FILE NO: NA

WATERMAIN EXTENSION OFF ARTHUR PHILLIP DRIVE NORTH RICHMOND HAWKESBURY

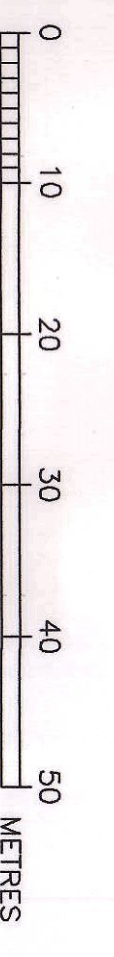
DESIGNED: A.P.
DRAWN: ST
VERIFIED: C.T.
REVIEWED: C.T.
APPROVED: C.T.



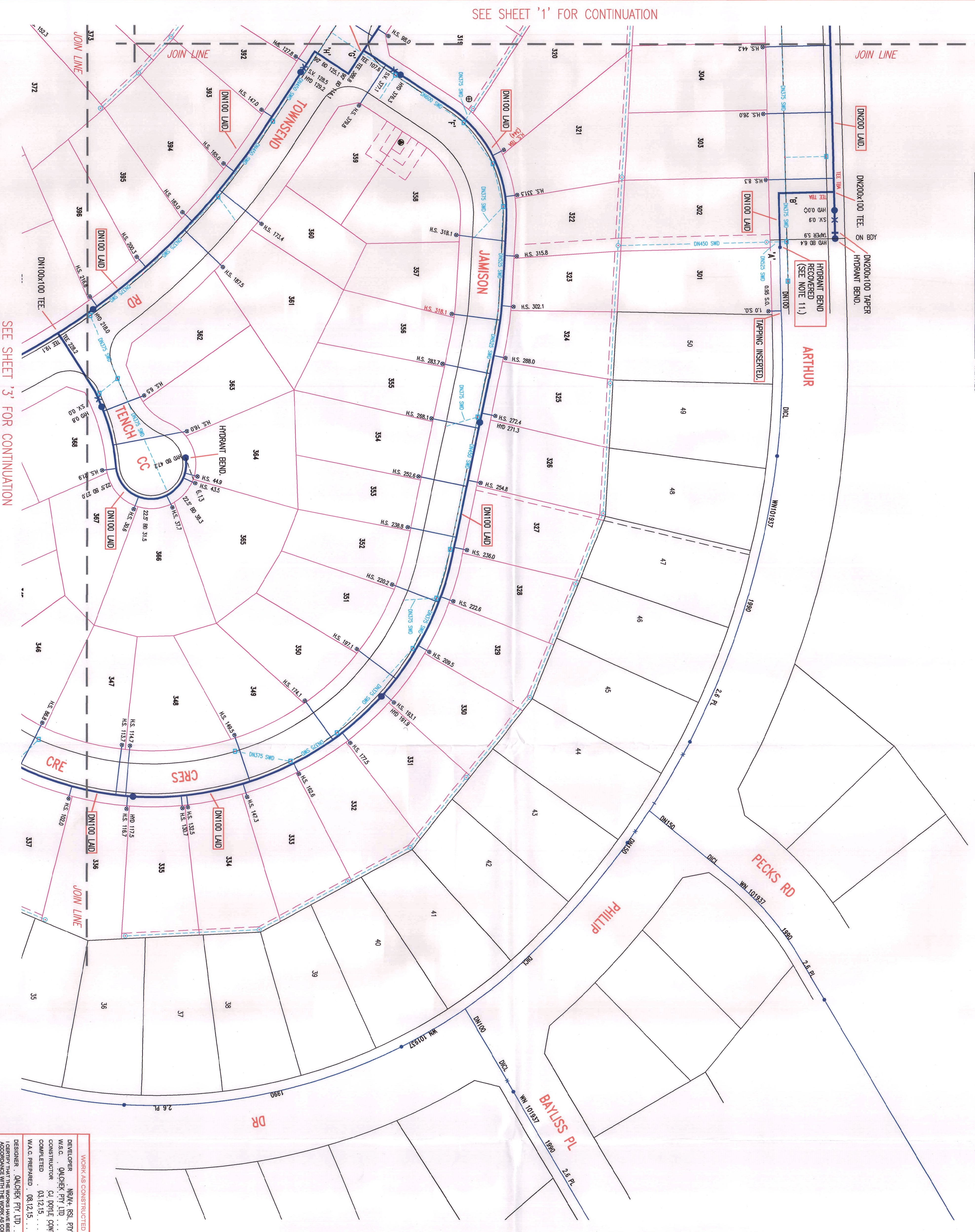
DEVELOPER CONTRACT PLAN
STAGE 3 - YOBARNIE
WORKS AS CONSTRUCTED

SEE SHEET '2' FOR CONTINUATION

SEE SHEET '3' FOR CONTINUATION



SEE SHEET '1' FOR CONTINUATION



SEE SHEET '3' FOR CONTINUATION

DEVELOPER CONTRACT PLAN
STAGE 3 - YOBARNIE
WORK-AS-CONSTRUCTED

- ⊕ 1.5m WIDE EASEMENT FOR DRAINAGE (PROPOSED)
- ⊗ 3m WIDE EASEMENT FOR DRAINAGE (PROPOSED)
- SUBSTATION EASEMENTS

No.	AMENDMENT DESCRIPTION	BY	DATE
A	ISSUES FOR REVIEW	A.P.	25.02.15
B	ISSUED FOR TENDER	A.P.	24.04.15
C	ISSUED FOR SMC APPROVAL	A.P.	30.04.15
D	TAPPING LOCATIONS AMENDED	A.P.	17.08.15
E	TAPPING OFFSETS AMENDED	J.F.	03.09.15

WORK-AS-CONSTRUCTED CERTIFICATION

DEVELOPER: NRM4, RSL, PTY, LTD.
 W.S.C.: DALCHER, PTY, LTD.
 CONTRACTOR: CJ DOTTLE CONTRACTING
 COMPLETED: 03.12.15
 W.A.C. PREPARED: 08.12.15

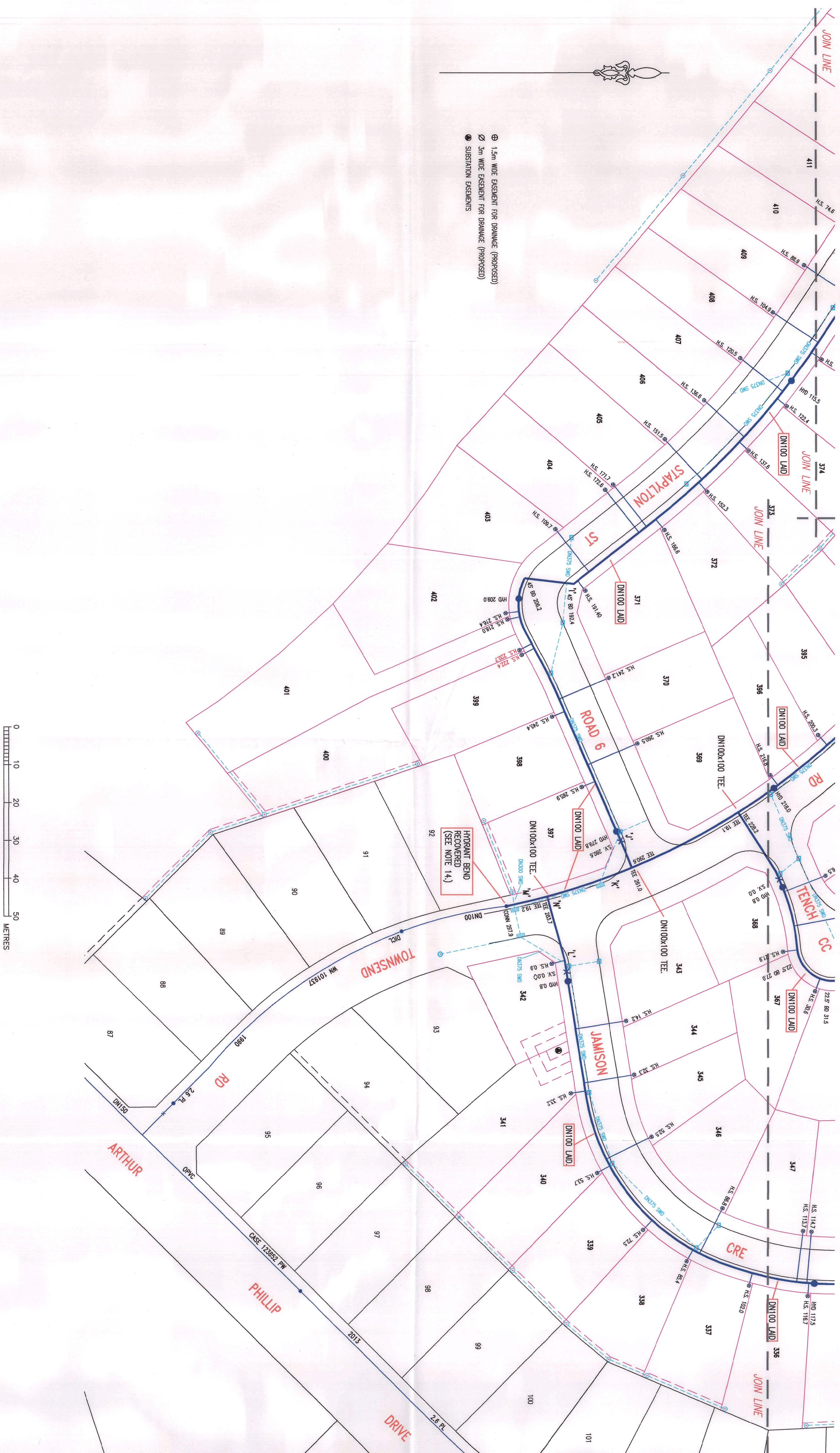
DESIGNER: DALCHER, PTY, LTD.
 I CERTIFY THAT THE WORKS HAVE BEEN CONSTRUCTED IN ACCORDANCE WITH THE WORK-AS-CONSTRUCTED DRAWINGS

VERIFIED: C.T.
 REVIEWED: C.T.
 APPROVED: C.T.

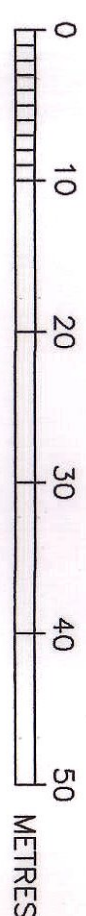
SYDNEY WATER CORPORATION
 Case No. 143022PW SHT 2 OF 3 SHTS.
 FOR DETAILS OF SERVICES SEE SHEET 1

SEE SHEET '1' FOR CONTINUATION

SEE SHEET '2' FOR CONTINUATION



- ⊕ 1.5m WIDE EASEMENT FOR DRAINAGE (PROPOSED)
- ⊗ 3m WIDE EASEMENT FOR DRAINAGE (PROPOSED)
- SUBSTATION EASEMENTS



No.	ISSUES FOR REVIEW	AMENDMENT DESCRIPTION	BY	DATE
A	ISSUES FOR REVIEW	AMENDMENT DESCRIPTION	BY	DATE
B	ISSUED FOR TENDER	A.P.	24.04.15	
C	ISSUED FOR SMC APPROVAL	A.P.	30.04.15	
D	TAPPING LOCATIONS AMENDED	A.P.	17.08.15	
E	TAPPING OFFSET AMENDED	J.F.	03.09.15	

WORKS AS CONSTRUCTED CERTIFICATION

SYDNEY WATER CORPORATION

DEVELOPER: N804- RSL PTY. LTD.
 W.S.C.: OALCHER PTY. LTD.
 CONSTRUCTOR: C.J. DYWIDJEWICZ CONTRACTING
 COMPLETED: 03.12.15
 W.A.C. PREPARED: 08.12.15

DESIGNER: OALCHER PTY. LTD.
 I CERTIFY THAT THE WORKS HAVE BEEN CONSTRUCTED IN ACCORDANCE WITH THE WORKS AS CONSTRUCTED DRAWINGS

DESIGNED: A.P. DRAFTED: ST. VERIFIED: C.T. REVIEWED: C.T. APPROVED: C.T.

FOR DETAILS OF SERVICES SEE SHEET 1