



Better Built Homes - Better Built House and Land Package
\$1,315,439

4 3 2 579.9M²

Lot:	2
Lot Area:	579.9m ²
Building Width:	m
Building Depth:	m
Building Size:	m ²

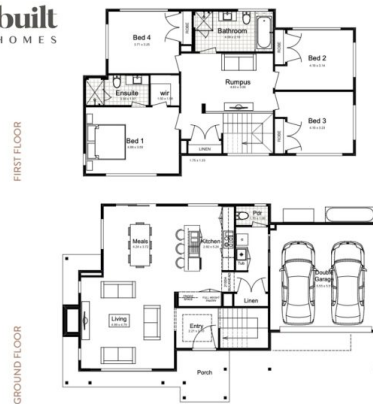
Introducing a Rare Gem in the Redbank Estate, Welcome to Lot 2, Mantle Avenue North Richmond.

Explore the Clayton home, an exquisite blend of style and functionality, tailor-made for the modern family. With 4 bedrooms, 2.5 bathrooms, 2 living spaces, and a study, this residence redefines practical yet stylish living. With its impressive facade, the Clayton stands out in the crowd. Choose from the Hunter's bold mixed materials or the elegant Brighton and Traditional facades, each showcasing unique character and design.

Experience the joy of open-plan living, where well-sized rooms seamlessly flow together, creating a boutique atmosphere throughout. Urban living meets suburban charm, offering you the best of both worlds.

This exclusive house and land package is a rare find within the prestigious Redbank community. Nestled among mountain views and a north-easterly aspect, this is a true modern family oasis.

Don't miss out on this unparalleled opportunity to elevate your family's lifestyle. Contact the Redbank Sales Team at 1300 BUY RED to learn more and take the first step towards your dream home in Redbank.



For more information, please speak to our sales team on 1300 289 733